

TOWN OF IROQUOIS FALLS devonshire park improvements

- L1 - Excavation and Demolition Plan
- L2 - Site Layout and Grading Plan
- L3 - Landscape Materials Plan
- L4 - Playground Events
- L5 - Landscape Details
- M01 - Plumbing Layout
- E01 - Electrical Site Plan and Details
- E02 - Enlarged Plan, Single Line Diagram, Details and Schedules
- E03 - Water Feature Pad Bonding, Specifications and Details

ISSUED FOR BIDDING

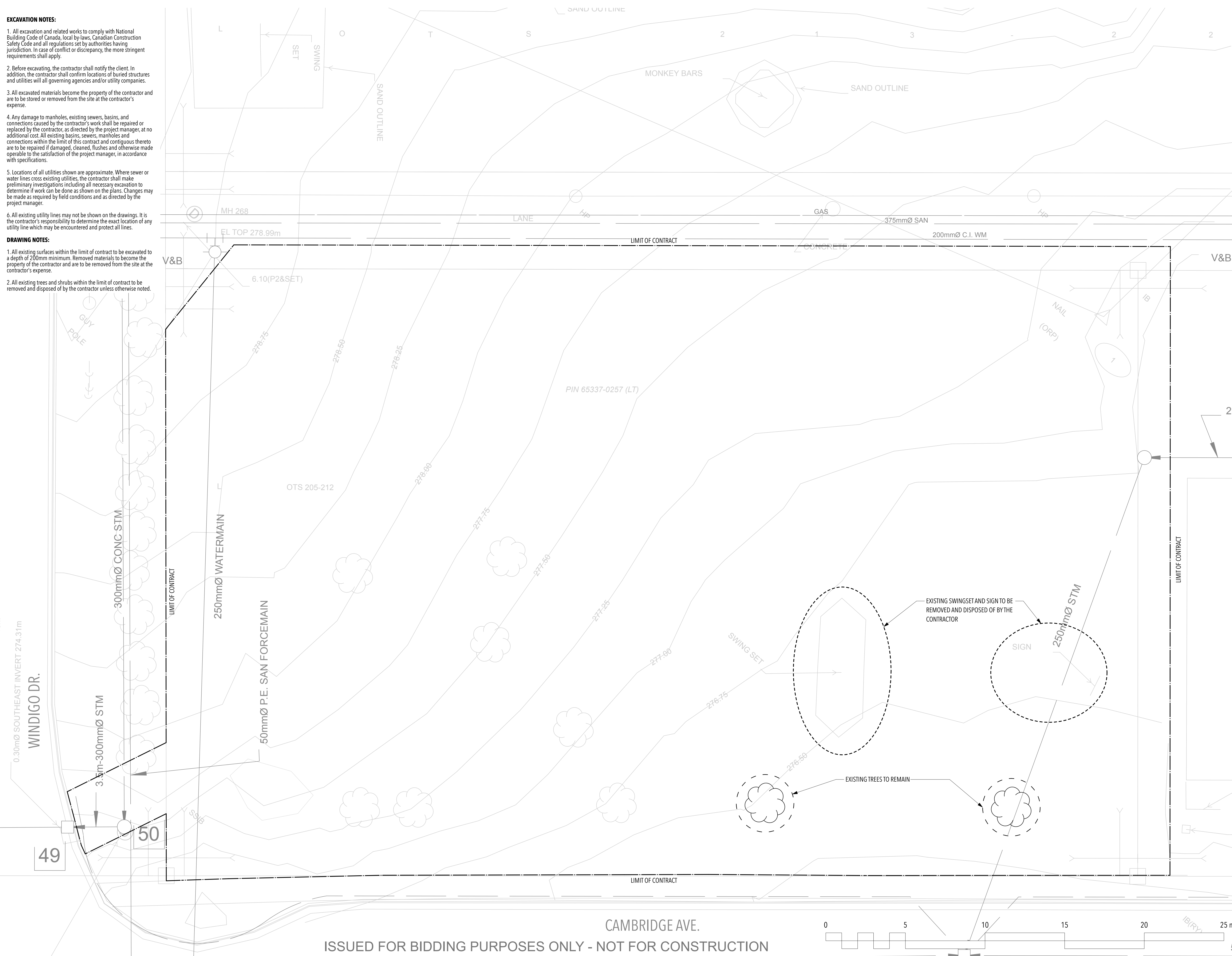


EXCAVATION NOTES:

1. All excavation and related works to comply with National Building Code of Canada, local by-laws, Canadian Construction Safety Code and all regulations set by authorities having jurisdiction. In case of conflict or discrepancy, the more stringent requirements shall apply.
2. Before excavating, the contractor shall notify the client. In addition, the contractor shall confirm locations of buried structures and utilities will all governing agencies and/or utility companies.
3. All excavated materials become the property of the contractor and are to be stored or removed from the site at the contractor's expense.
4. Any damage to manholes, existing sewers, basins, and connections caused by the contractor's work shall be repaired or replaced by the contractor, as directed by the project manager, at no additional cost. All existing basins, sewers, manholes and connections within the limit of this contract and contiguous thereto are to be repaired if damaged, cleaned, flushed and otherwise made operable to the satisfaction of the project manager, in accordance with specifications.
5. Locations of all utilities shown are approximate. Where sewer or water lines cross existing utilities, the contractor shall make preliminary investigations including all necessary excavation to determine if work can be done as shown on the plans. Changes may be made as required by field conditions and as directed by the project manager.
6. All existing utility lines may not be shown on the drawings. It is the contractor's responsibility to determine the exact location of any utility line which may be encountered and protect all lines.

DRAWING NOTES:

1. All existing surfaces within the limit of contract to be excavated to a depth of 200mm minimum. Removed materials to become the property of the contractor and are to be removed from the site at the contractor's expense.
2. All existing trees and shrubs within the limit of contract to be removed and disposed of by the contractor unless otherwise noted.



trace

NATURAL ENVIRONMENTS | BUILT ENVIRONMENTS

698 Main Street
Suite 202
Moncton, NB E1C 1E4

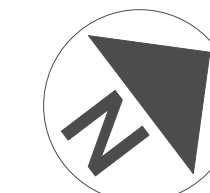
t. 506.386.2946
f. 506.388.7938
info@tracestudio.ca

Client:

THE TOWN OF IROQUOIS FALLS



PROJECT LOCATION



**DEVONSHIRE PARK
PLAYGROUND**
Iroquois Falls, ON

Drawing Name:

**EXCAVATION AND DEMOLITION
PLAN**

1 Issued for tender June 12, 2026

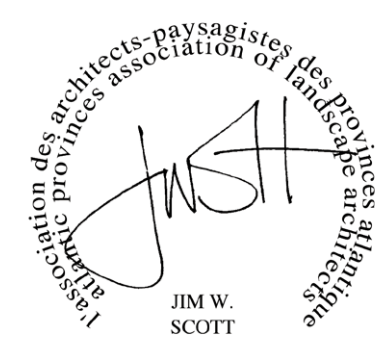
No.	Revision	Date
1	Issued for tender	June 12, 2026

Scale:	1:100	Date:	May 2026
--------	-------	-------	----------

Drawn by:	NM	Checked by:	JWS
-----------	----	-------------	-----

Approved by:		Dept. Approval:	
--------------	--	-----------------	--

Stamp



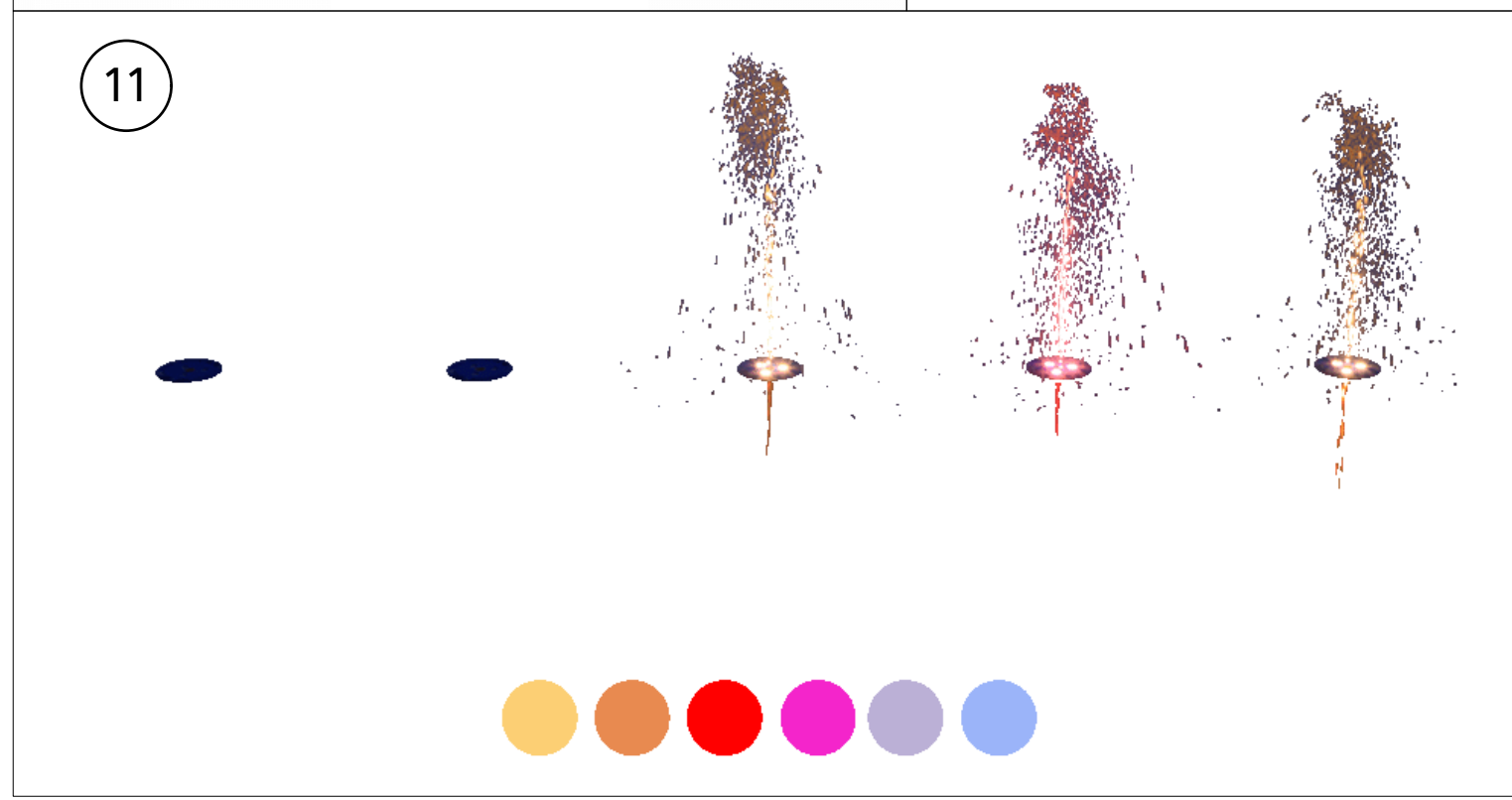
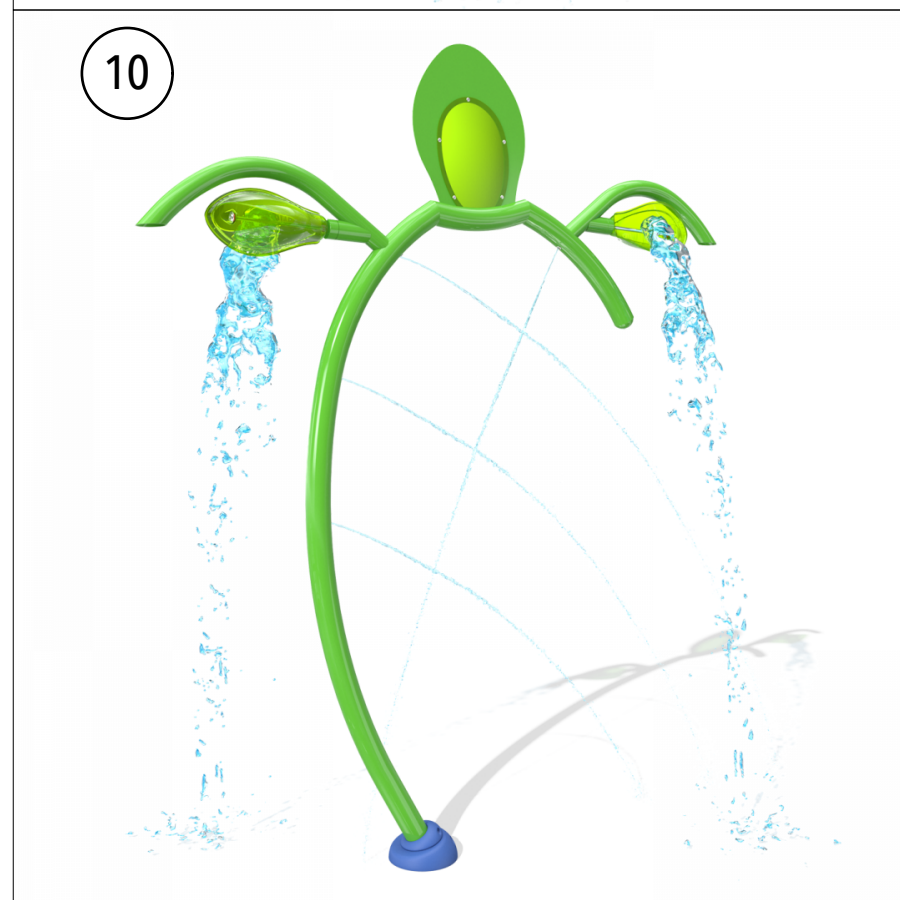
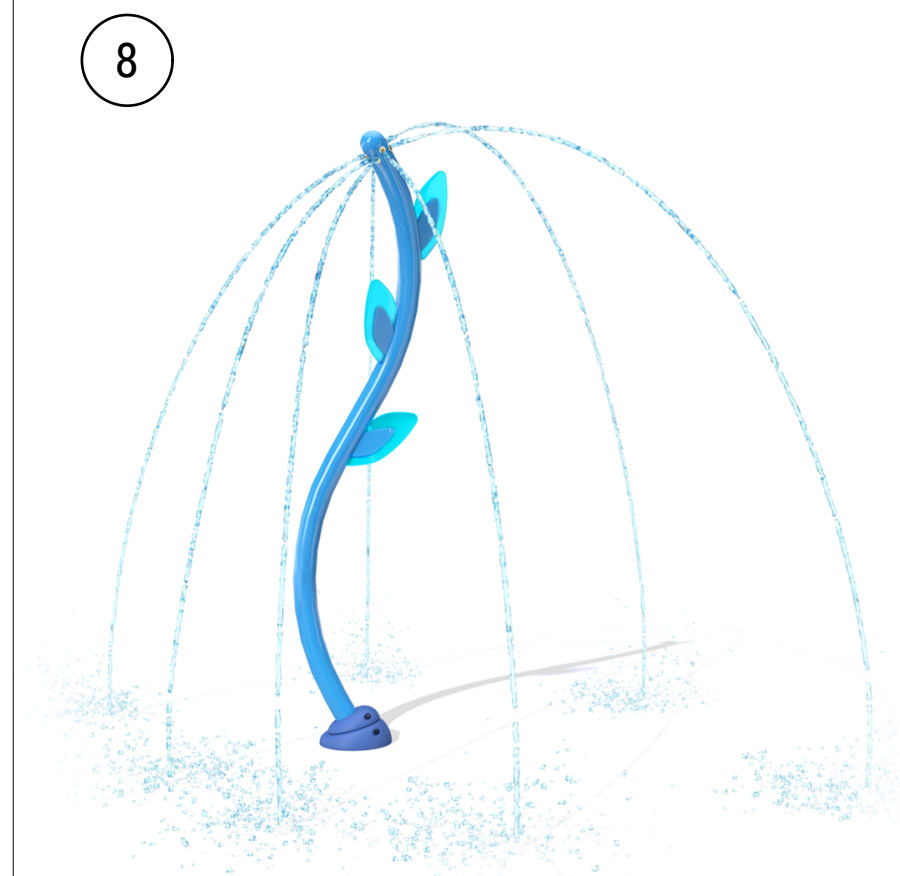
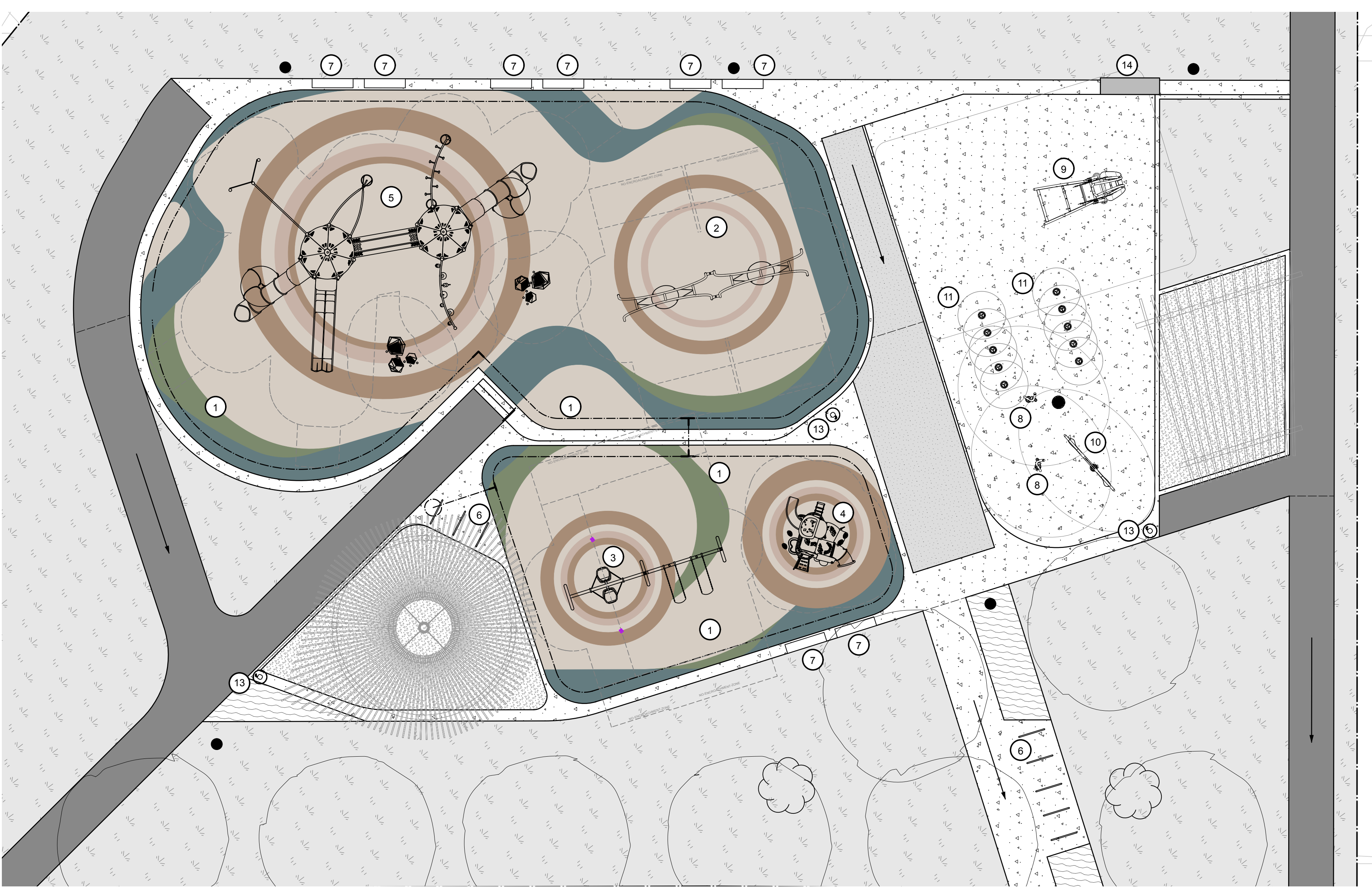
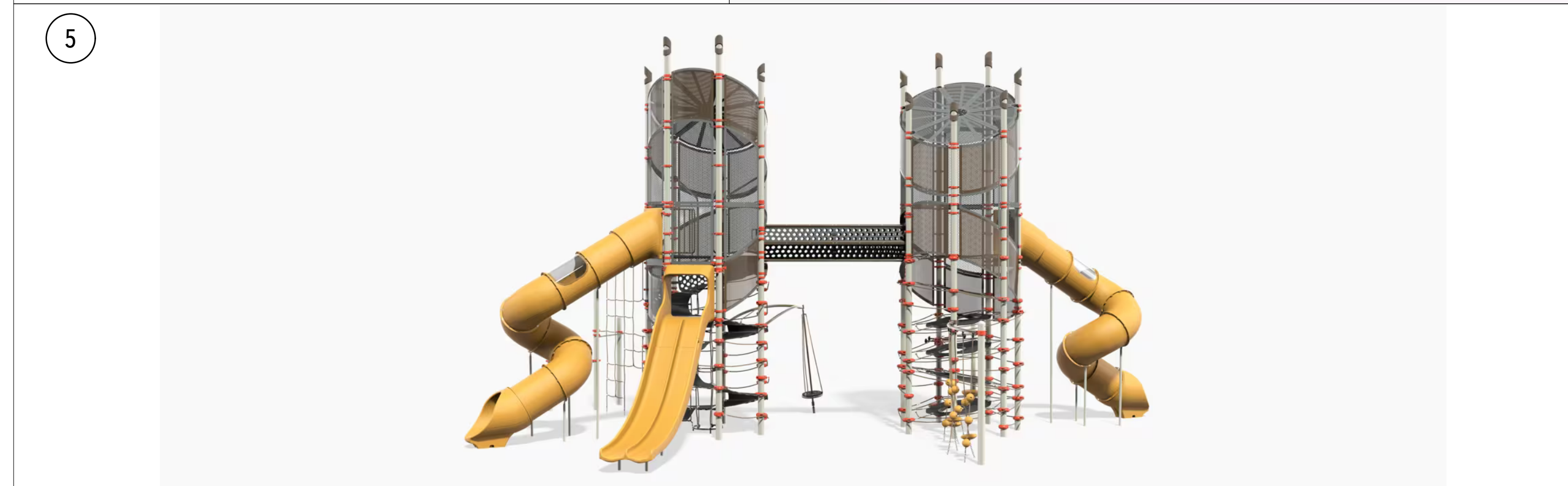
Drawing No.

L1

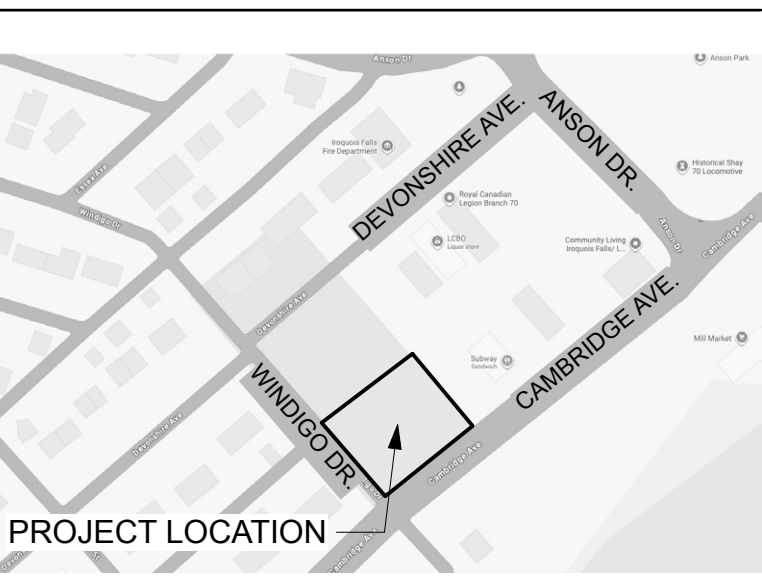
LEGEND

- LIMIT OF CONTRACT
- - - SAFETY ZONE
- SPLASH ZONE
- ASPHALT
- CONCRETE
- ARTIFICIAL GRASS
- TOPSOIL AND SOD
- PLANTING BED
- TAILINGS
- NEW LIGHT POST

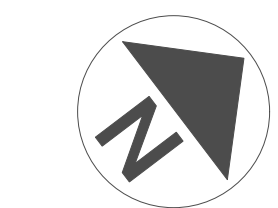
- DRAWING LABELS:**
1. Landscape Structures Facet Steppers Set - Models 237103, 237104, 237105
 2. Landscape Structures Oodle Swing, Double - Model 210117
 3. Landscape Structures Friendship Swing w/5" Arch Swing Frame - Model 237293 + 5" Arch Swing Additional Bay - Model 221293
 4. Landscape Structures Motion - Model 197057
 5. Landscape Structures Super Netplex 12' & 12' Towers - Model 254629
 6. Landscape Structures Arches Bike Rack - Model 185654
 7. Landscape Structures Log Bench - Model 173595
 8. Vortex Intl. Superwave - VOR 0136
 9. Vortex Intl. Seaweed N°3 - VOR 7781
 10. Vortex Intl. Sea Silhouette Trutle - VOR 7689
 11. Vortex Intl. Coreoplay Sunset - VOR 7060
 12. Vortex Intl. Playsafe Drain N°4 - VOR 1004
 13. Landscape Structures Kaleidoscope Litter Receptacle - Model 186589
 14. Vortex Intl. Smartflow Command Centre Cabinet



Client: THE TOWN OF IROQUOIS FALLS



DEVONSHIRE PARK PLAYGROUND
 Iroquois Falls, ON

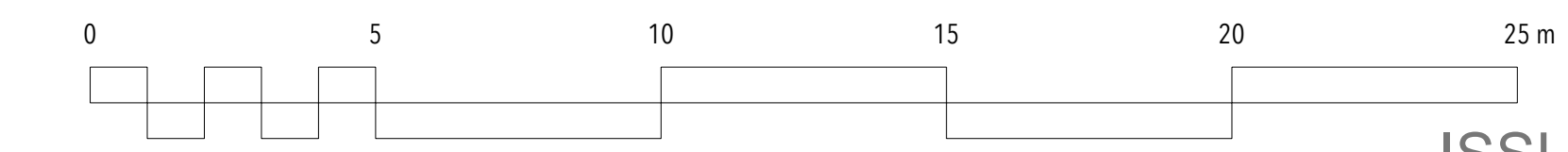


Drawing Name: **PLAYGROUND EVENTS**

No.	Revision	Date
1	Issued for tender	June 12, 2026

Scale:	Date:
as noted	May 2026
Drawn by: NM	Checked by: JWS
Approved by:	Dept. Approval:

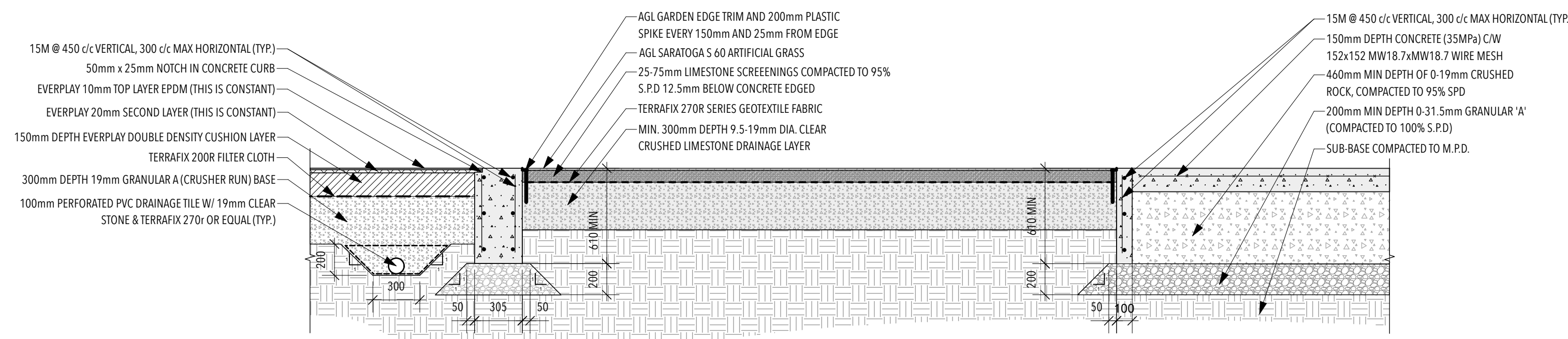
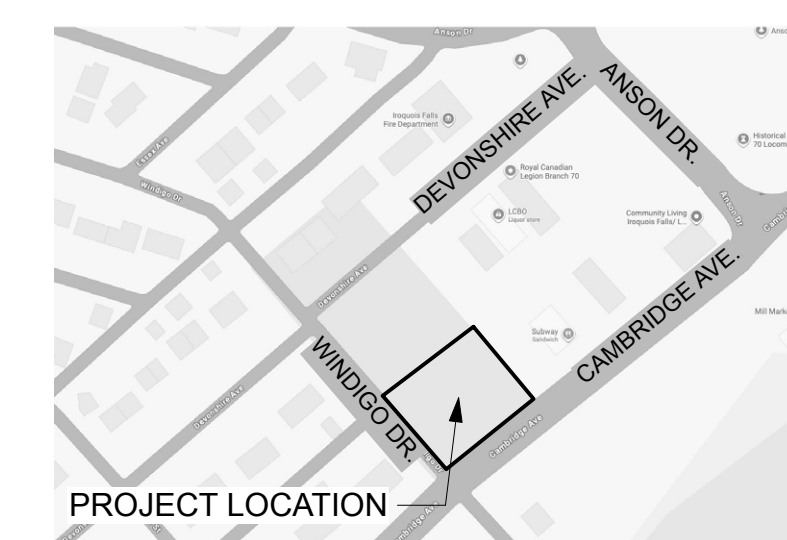
Stamp: Association des architectes-paysagistes de la province de Québec
 JWS
 JIM W. SCOTT
 Drawing No. **L4**



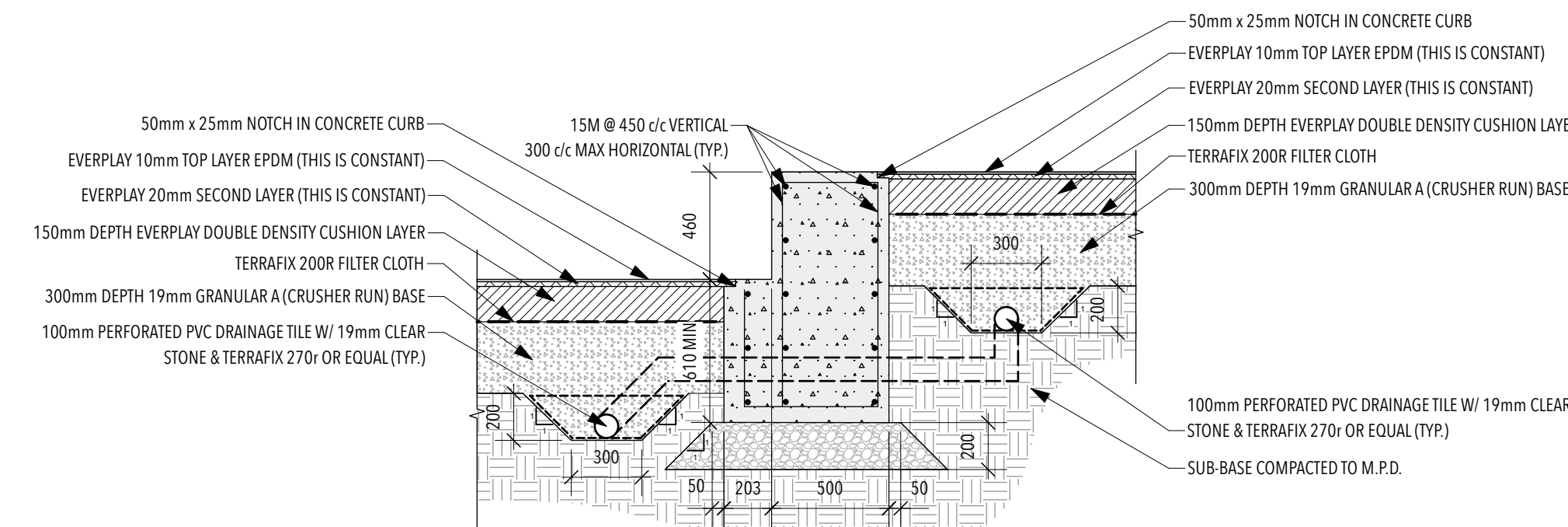
ISSUED FOR BIDDING PURPOSES ONLY - NOT FOR CONSTRUCTION

Client:

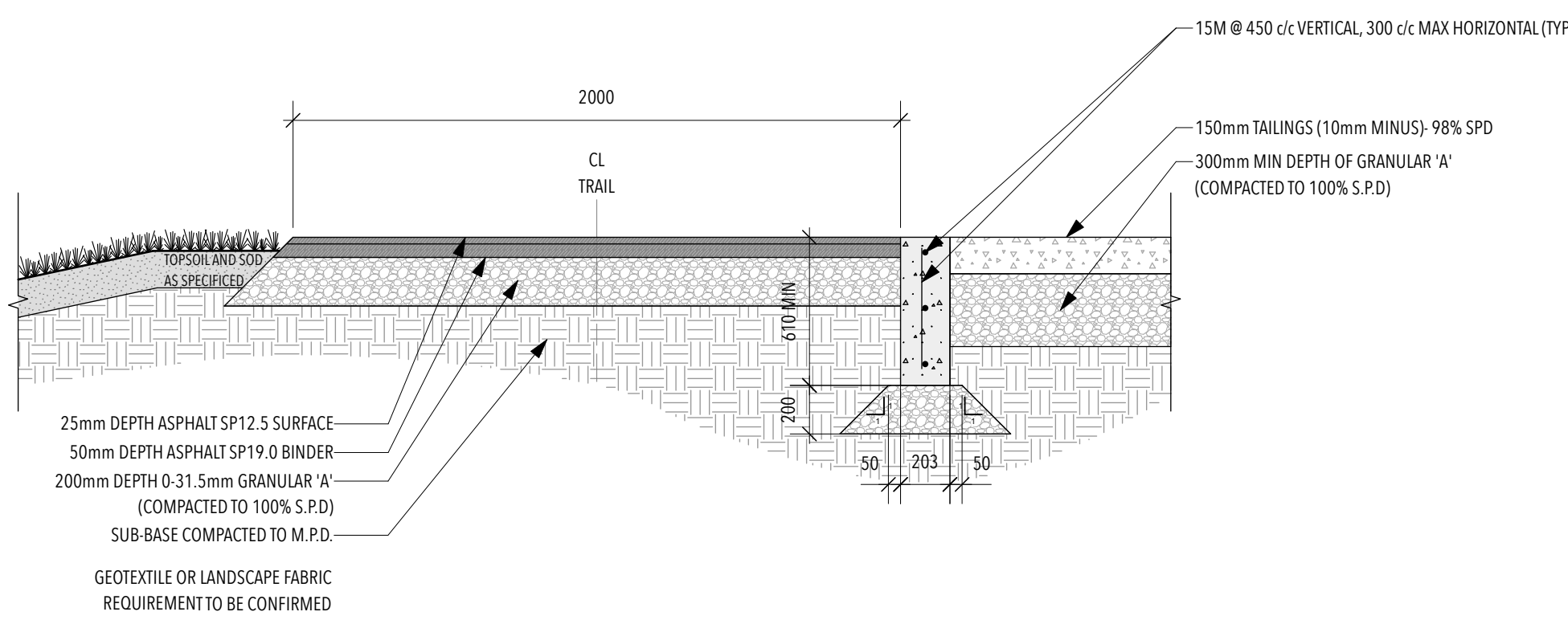
THE TOWN OF IROQUOIS FALLS



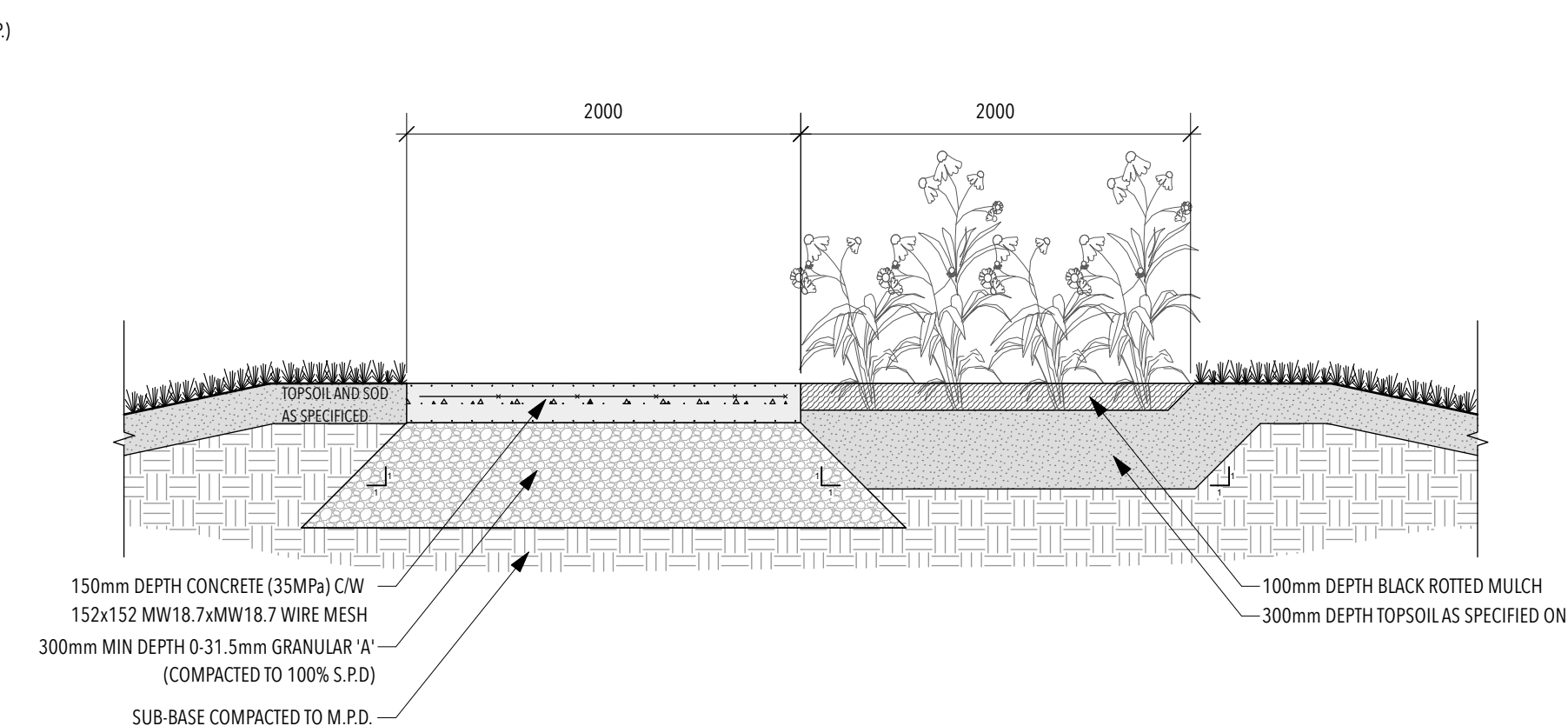
1
L3
PLAYZONE EDGING, TURF, AND SPLASHPAD SECTION
1:25



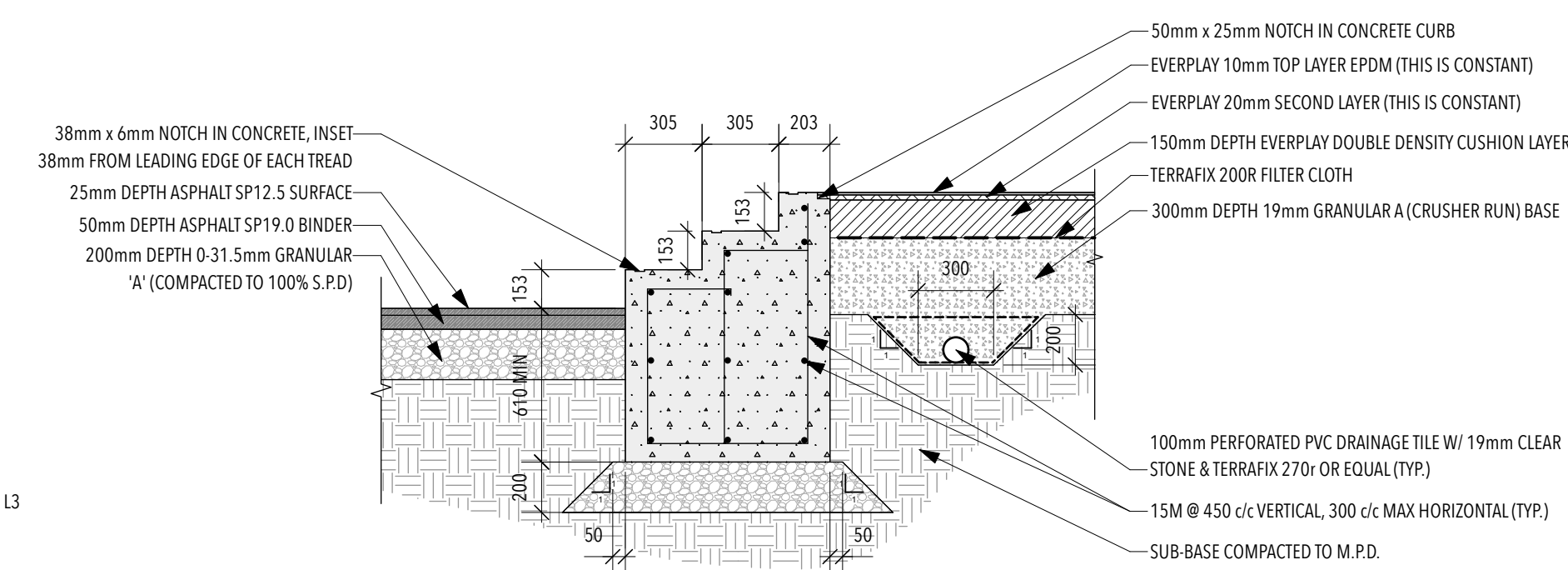
2
L3
PLAYZONE EDGING AND SURFACE SECTION
1:25



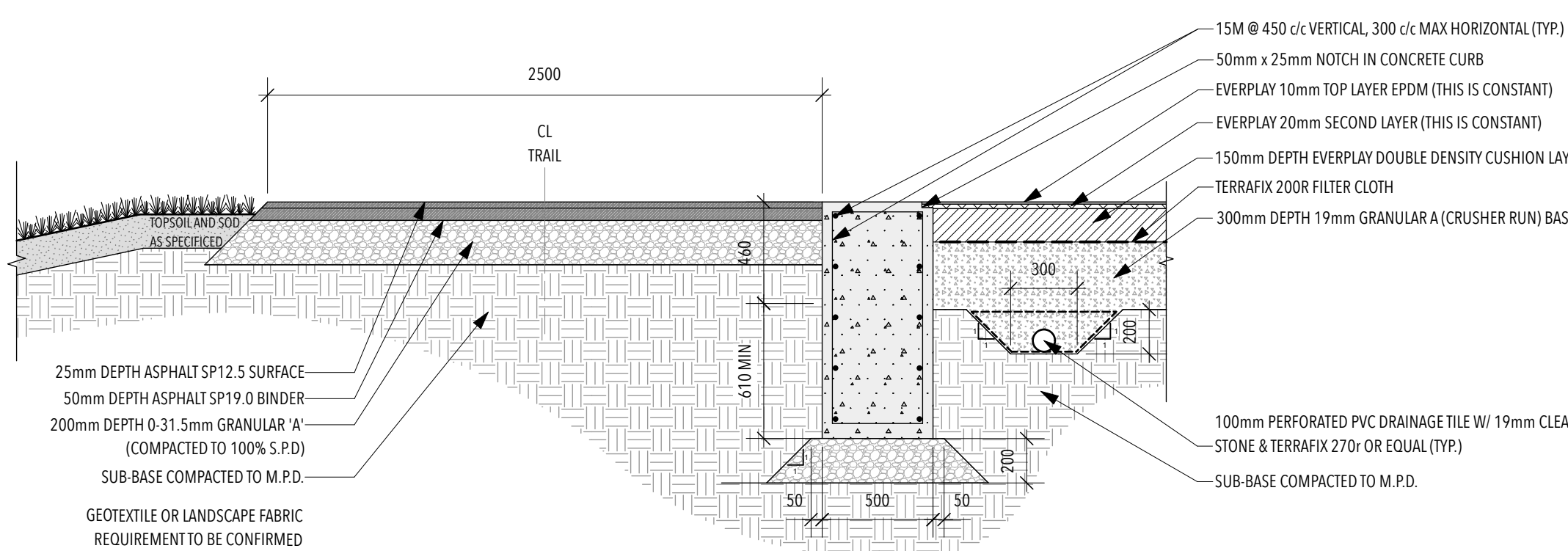
3
L3
ASPHALT PATH, CONCRETE EDGE, AND TAILINGS SECTION
1:25



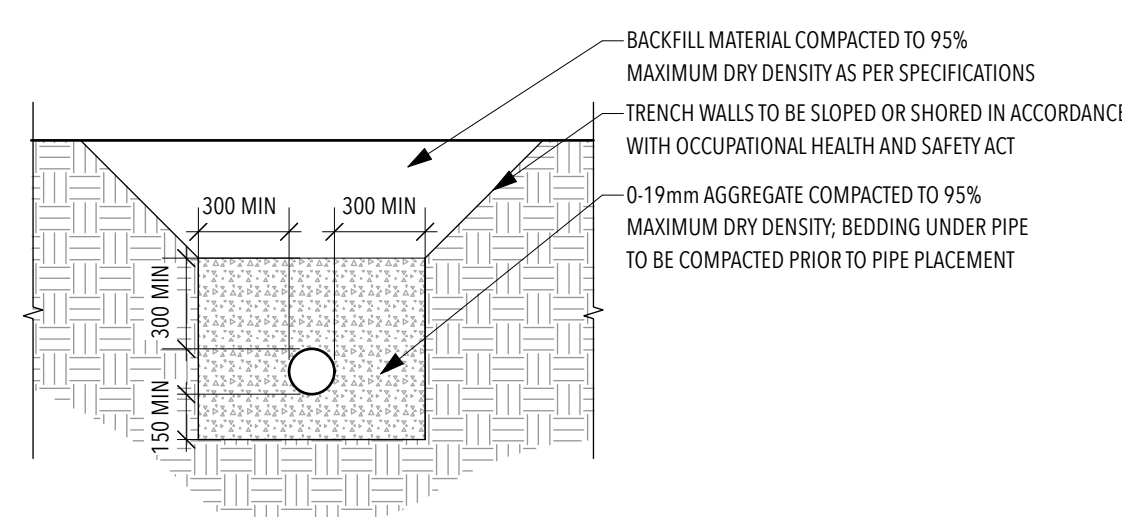
4
L3
CONCRETE PATH AND PLANTING BED SECTION
NTS



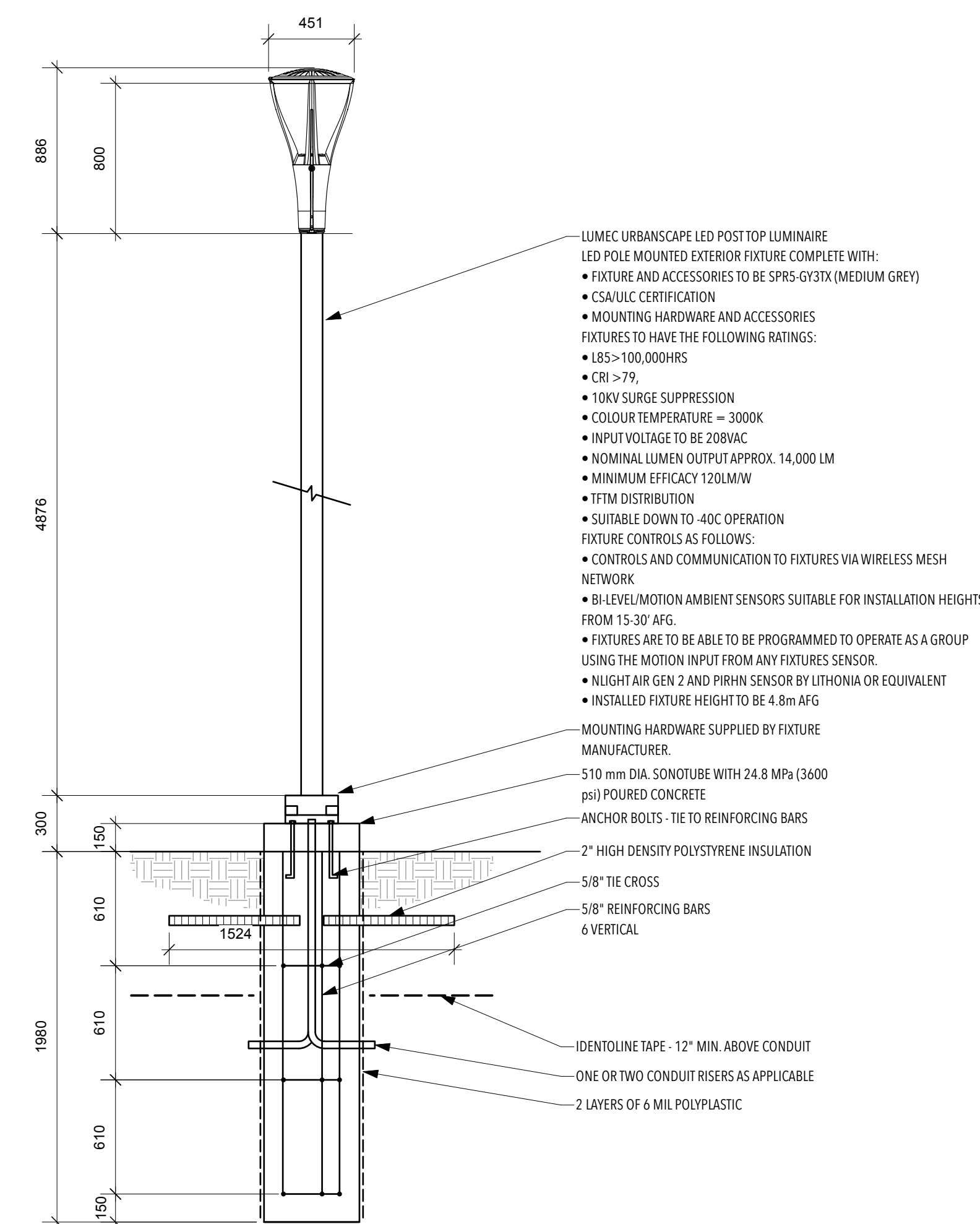
5
L3
ASPHALT PATH, STAIRS, AND PLAYZONE SURFACE SECTION
1:25



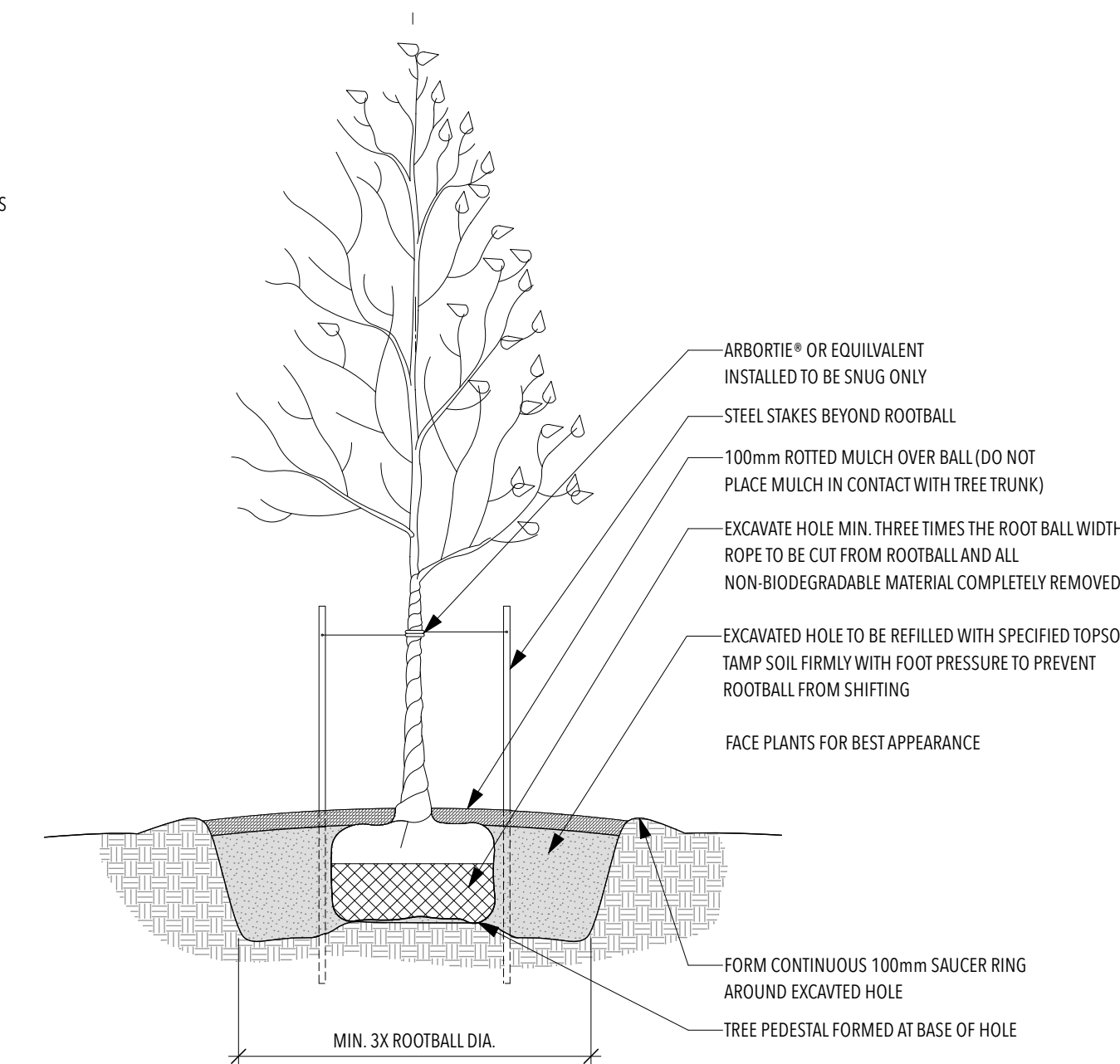
6
L3
ASPHALT PATH, CONCRETE EDGE, AND PLAY SURFACE SECTION
1:25



7
L3
TYPICAL PVC DRAIN PIPE TRENCH
NTS



8
L3
TYPICAL POLE MOUNTED FIXTURE INSTALLATION DETAIL
NTS



9
L3
DECIDUOUS TREE PLANTING DETAIL
NTS

DEVONSHIRE PARK
PLAYGROUND
Iroquois Falls, ON

Drawing Name:

LANDSCAPE DETAILS

1 Issued for tender June 12, 2026

No. Revision Date

Scale: as noted Date: May 2026

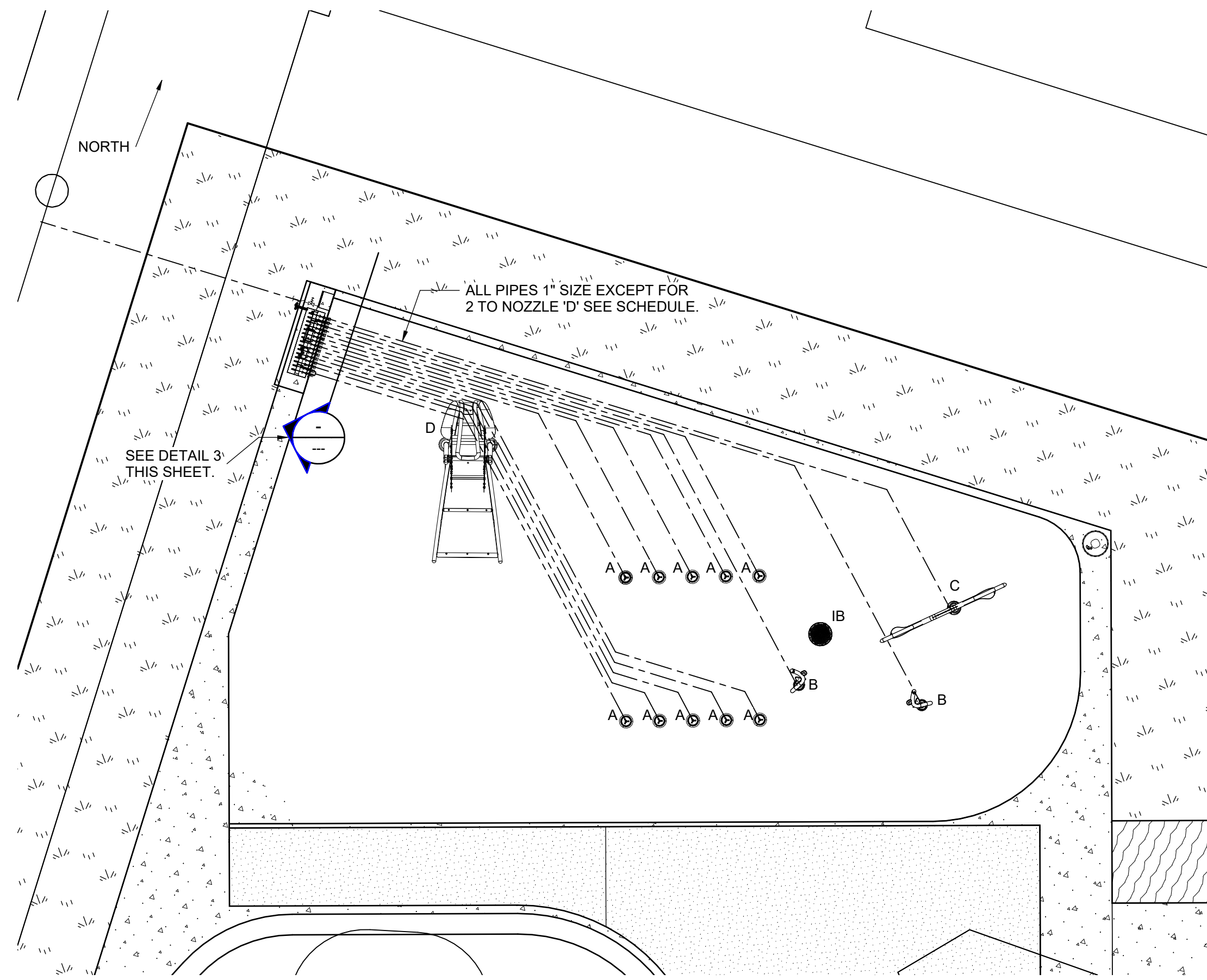
Drawn by: NM Checked by: JWS

Approved by: Dept. Approval:

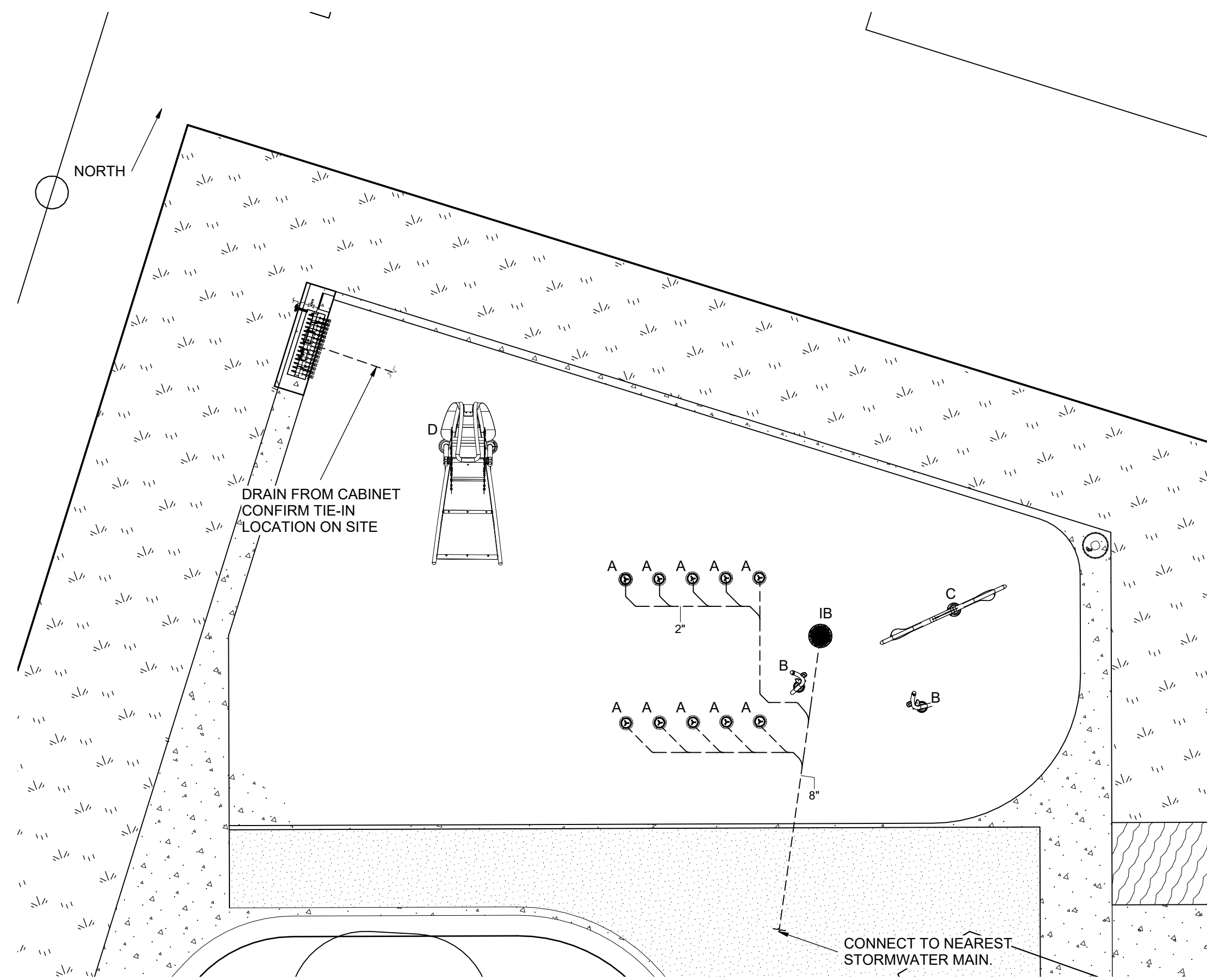
Stamp Drawing No.



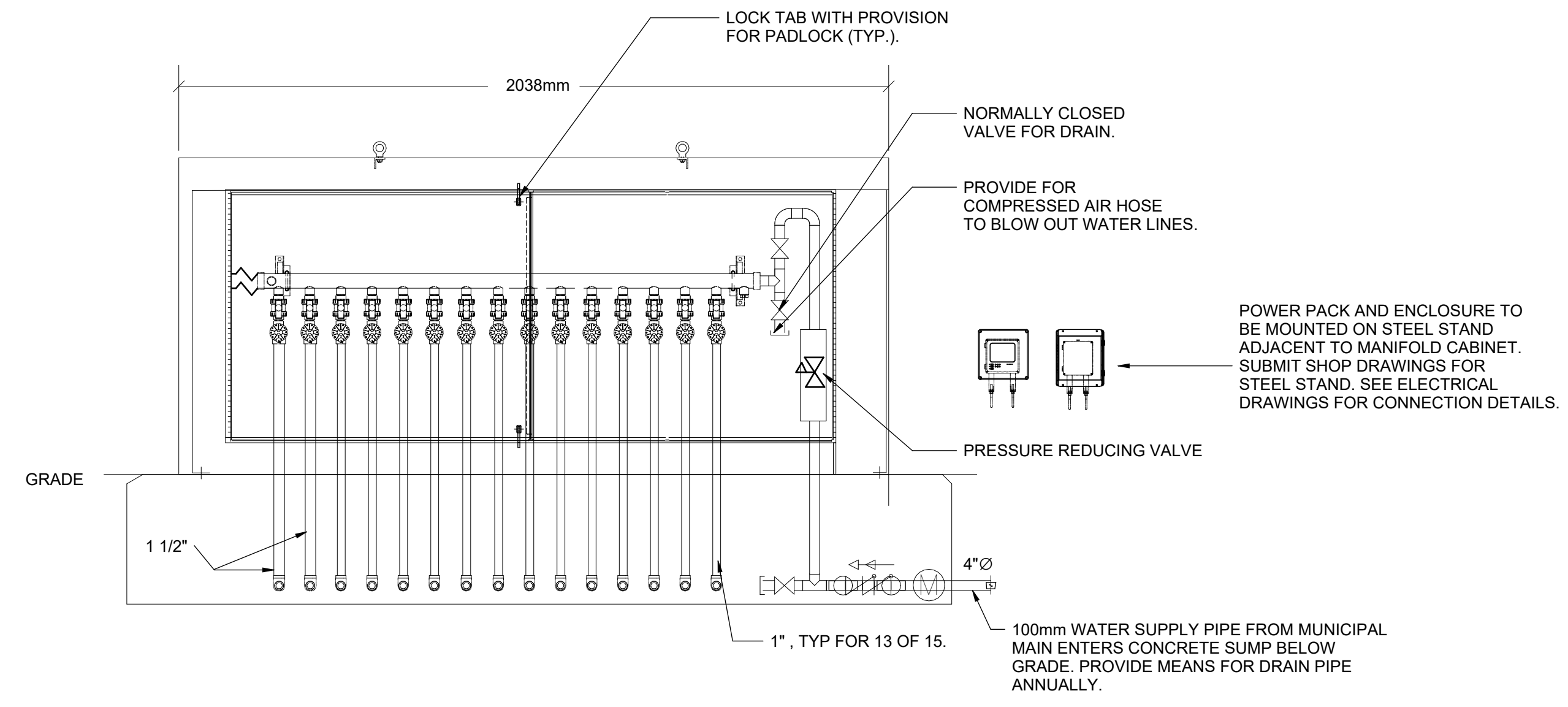
L5



1 PLAN SUPPLY WATER
1:100



2 PLAN SANITARY
1:100

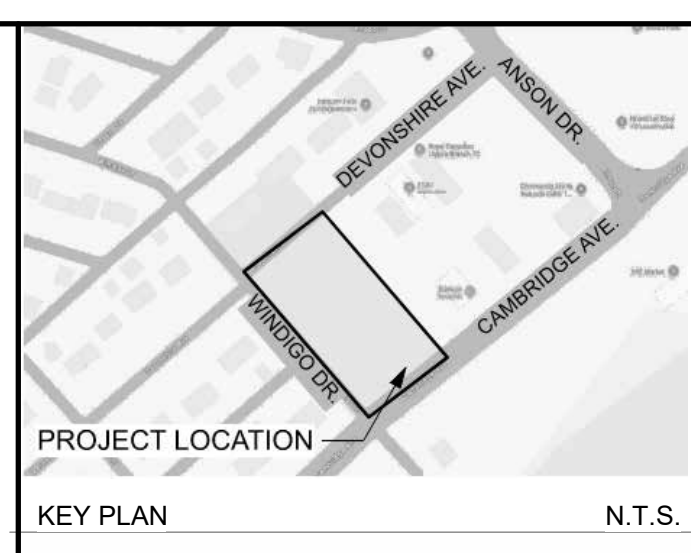


3 DETAIL MANIFOLD CABINET DETAIL
NTS

PLUMBING LEGEND	
SYMBOL	DESCRIPTION
— DCW —	WATER TO SPLASHPAD
- - - SAN - - -	SANITARY (BELOW GRADE)
⌞⌞⌞⌞⌞⌞	BACKFLOW PREVENTER
⌞	PRESSURE REDUCING VALVE
(M)	WATER METER

SPRAY NOZZLE SCHEDULE					
TAG	MANUFACTURER/MODEL	QUANTITY	TOTAL FLOW RATE, GPM	PIPE SIZE	DESCRIPTION
A	VORTEX / VOR 7060	10	50	1"	COREPLAY SUNSET
B	VORTEX / VOR 7781	2	11	1"	SEAWEED No 3
C	VORTEX / VOR 7689	1	8	1"	SEA SILHOUETTE TURTLE
D	VORTEX / VOR 8136	1	30	1 1/2"	SUPERWAVE

AREA DRAIN SCHEDULE			
TAG	QUANTITY	MANUFACTURER/MODEL	DESCRIPTION
A	10	VORTEX / VOR 7060	COREPLAY SUNSET (INTEGRAL DRAIN)
IB	1	VORTEX / VOR 1001	PLAYSAFE DRAIN



PROJECT LOCATION N.T.S.

trace
NATURAL ENVIRONMENTS | BUILT ENVIRONMENTS

698 Main Street
Suite 202
Moncton, NB E1C 1E4

t. 506.386.2946
f. 506.388.7938
info@tracestudio.ca

NOT FOR CONSTRUCTION

No	Description	Date	By
1	Issued for Client Review	2026.05.08	DB

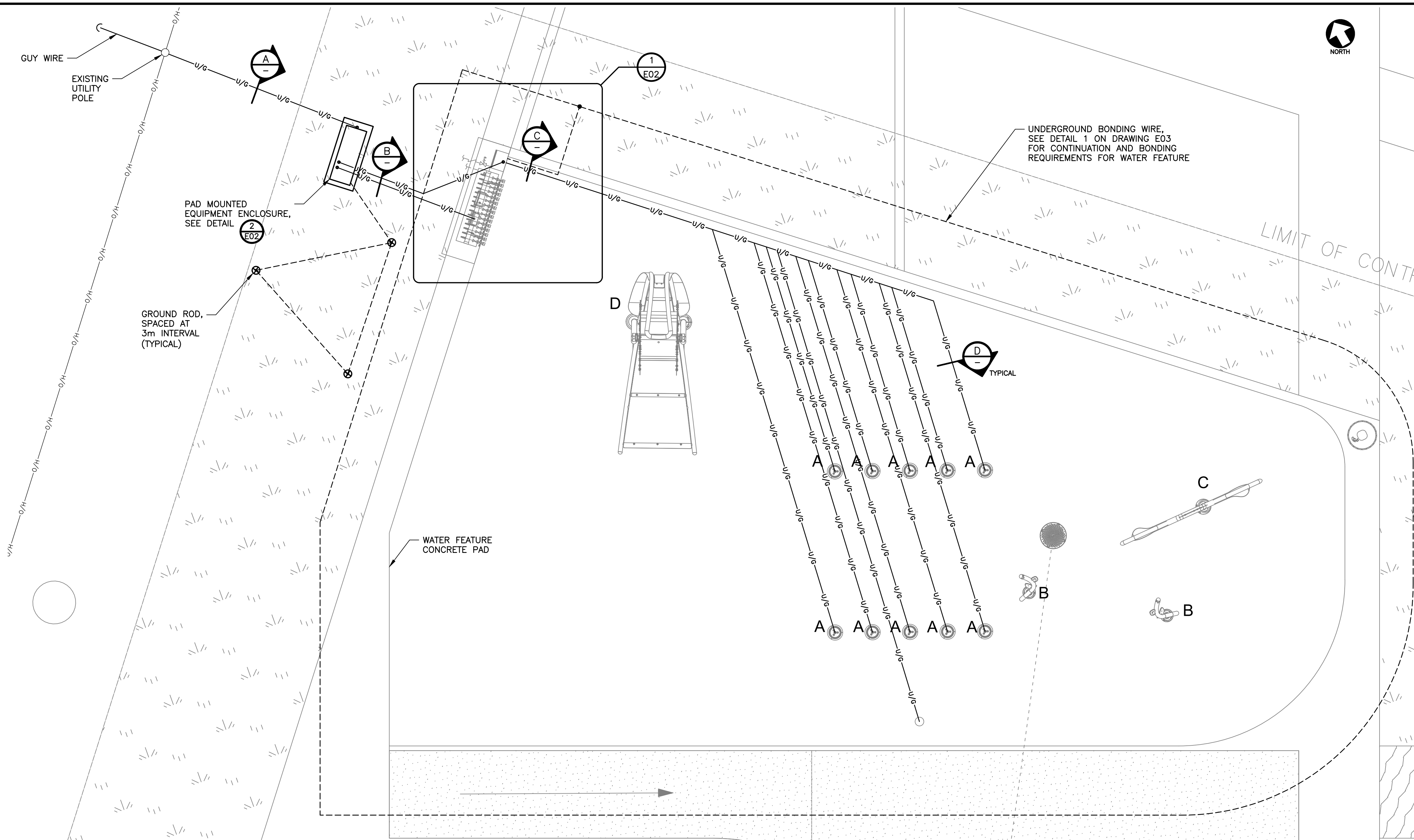
THE TOWN OF IROQUOIS FALLS

DEVONSHIRE PARK SPLASHPAD

MECHANICAL
PLUMBING LAYOUT



Contract No. 363941.00	Scale As indicated
Date MAY 8, 2026	Drawn RBO
Designed DB	Approved --
Checked --	Approved --
Sheet No. 1	of 2
M01	



- NOTES:**
- DIMENSIONS ARE IN MILLIMETRES UNLESS INDICATED OTHERWISE.
 - ALL WORK IS TO BE COMPLETED IN ACCORDANCE WITH THE GENERAL SPECIFICATIONS FOR MUNICIPAL SERVICES.
 - THE CONTRACTOR IS TO CONTACT ONTARIO PUBLIC WORKS, UTILITY, AND SERVICE PROVIDERS TO COORDINATE FIELD LOCATES OF SERVICES BEFORE STARTING CONSTRUCTION.
 - ELECTRICAL CONTRACTOR TO OBTAIN ALL NECESSARY PERMITS FOR DUCTWORK AND WIRING INSTALLATIONS, AND ARRANGE FOR ALL REQUIRED DUCTBANK INSPECTIONS FROM THE PROVINCIAL ELECTRICAL INSPECTOR AND UTILITY TO ENCASE CONDUITS IN CONCRETE.
 - ALL WORK & MATERIALS TO CONFORM TO THE REQUIREMENTS OF THE ONTARIO ELECTRICAL SAFETY CODE 2024 AND UTILITY UNDERGROUND DISTRIBUTION STANDARD (AS APPLICABLE).
 - ALL THE WORK TO BE CARRIED OUT IN ACCORDANCE WITH THE OCCUPATIONAL HEALTH AND SAFETY ACT OF ONTARIO.
 - ELECTRICAL SITE PLAN AND CONDUIT LAYOUTS ARE GENERALLY SCHEMATIC IN NATURE. CONTRACTOR TO VERIFY AND COORDINATE WITH OTHER TRADES TO LAYOUT ALL CONDUITS IN SUITABLE LOCATIONS.
 - BACKFILL PARTICLES SHALL BE LESS THAN 38mm AND BACKFILL SHALL BE COMPACTED TO AT LEAST 95% MAXIMUM DENSITY TO ASTM D698.
 - INSTALL CONDUIT SPACERS AT 1.5m INTERVALS. CONDUIT SHALL BE SECURED (STRAPPED-IN) TO THE SPACERS.

PROJECT LOCATION

KEY PLAN N.T.S.

trace
NATURAL ENVIRONMENTS | BUILT ENVIRONMENTS

698 Main Street
Suite 202
Moncton, NB E1C 1E4

T: 506.386.2946
F: 506.388.7938
info@tracestudio.ca

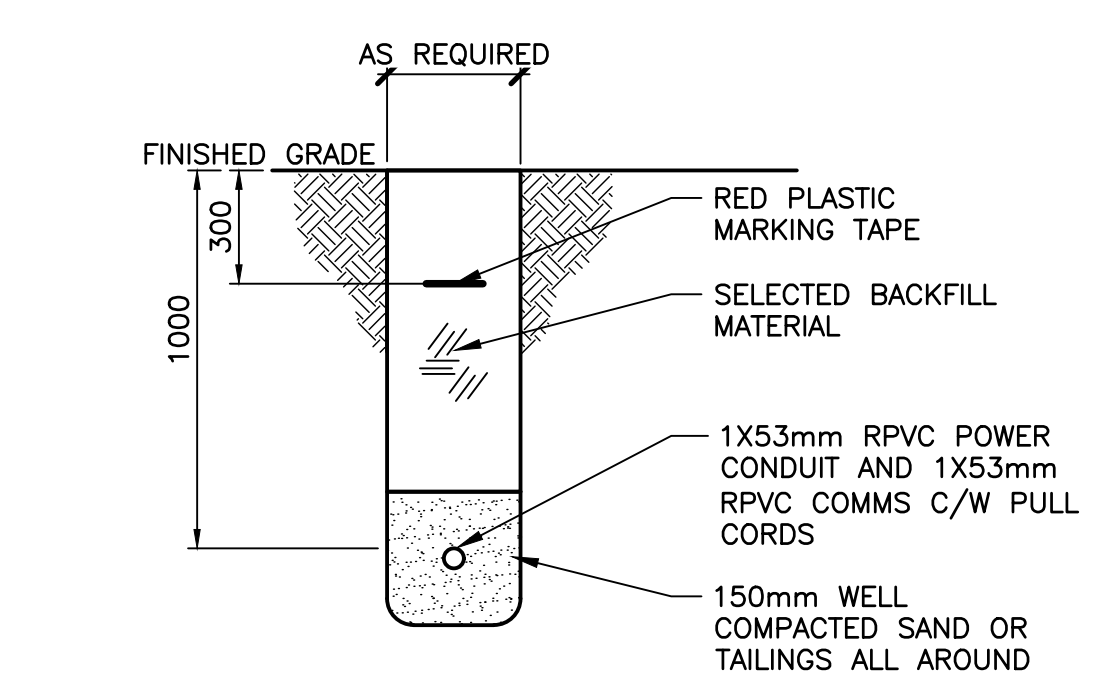
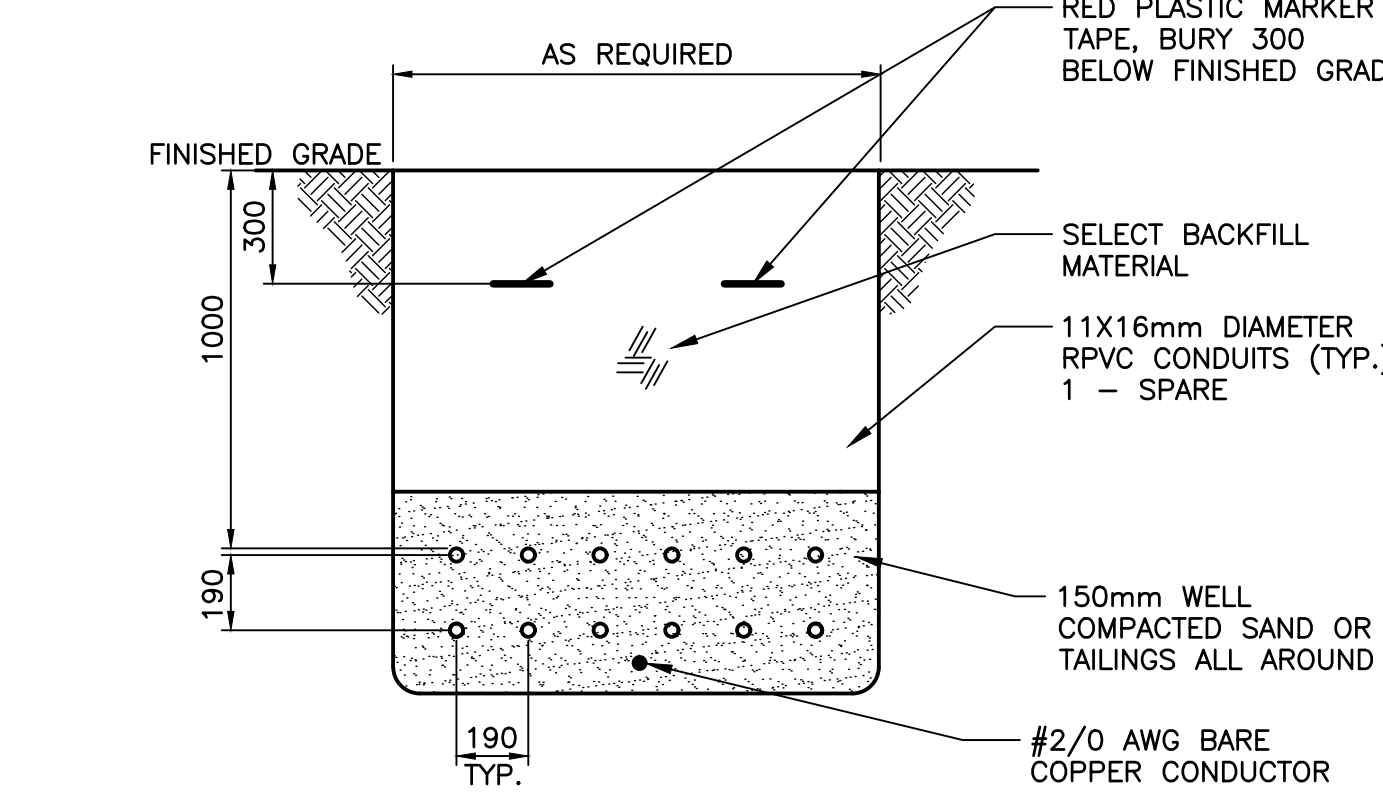
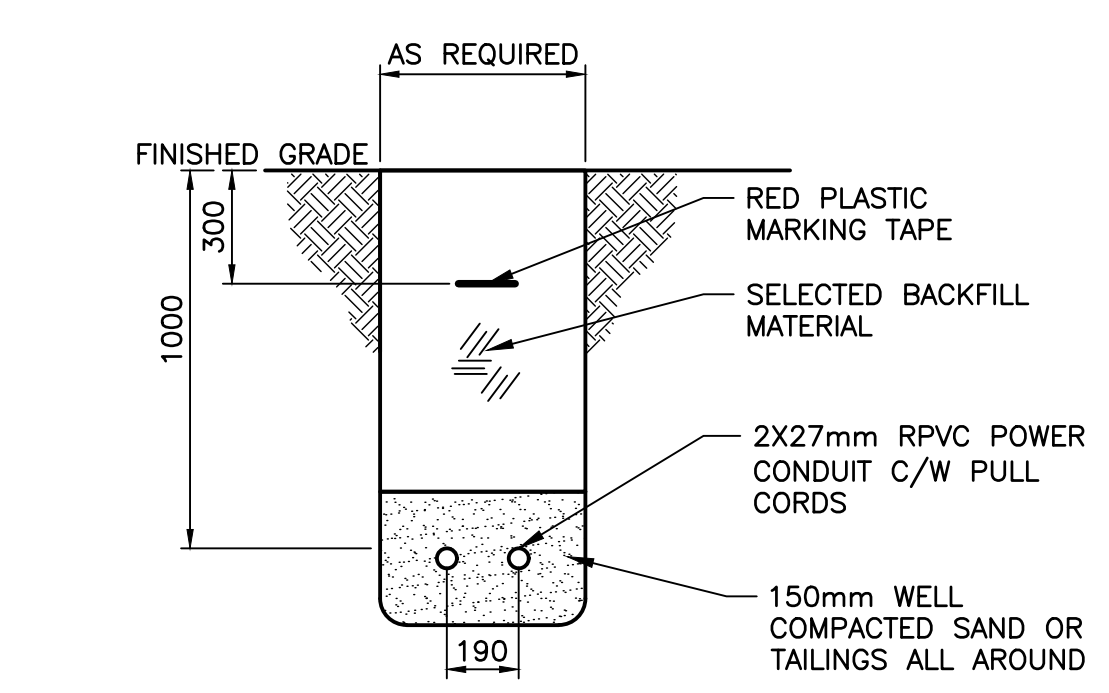
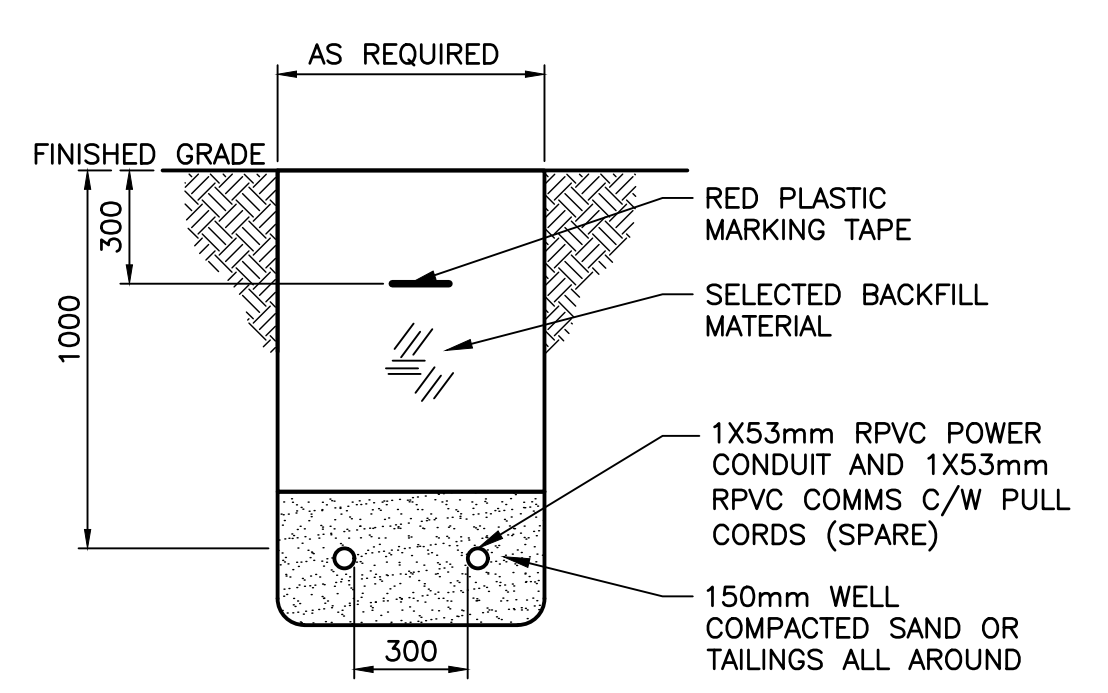
LEGEND

	DISTRIBUTION PANELBOARD
	UTILITY METER BASE
	CIRCUIT BREAKER OR HMCP (TYPE AS INDICATED)
	TRANSFORMER (TYPE AS INDICATED)
	UNDERGROUND CONDUIT
	UNDERGROUND BONDING WIRE
	OVERHEAD UTILITY LINE

SPRAY NOZZLE SCHEDULE

A	COREPLAY SUNSET WITH INTEGRAL LED LUMINAIRE
B	SEAWEED No. 3 - NO ELECTRICAL CONNECTION
C	SEA SILHOUETTE TURTLE - NO ELECTRICAL CONNECTION
D	SUPERWAVE - NO ELECTRICAL CONNECTION

1 PLAN - ELECTRICAL SITE LAYOUT
1:50



NOT FOR CONSTRUCTION

1	Issued for Client Review	2026.05.08	DB
No.	Description	Date	By
Revision or Issue			

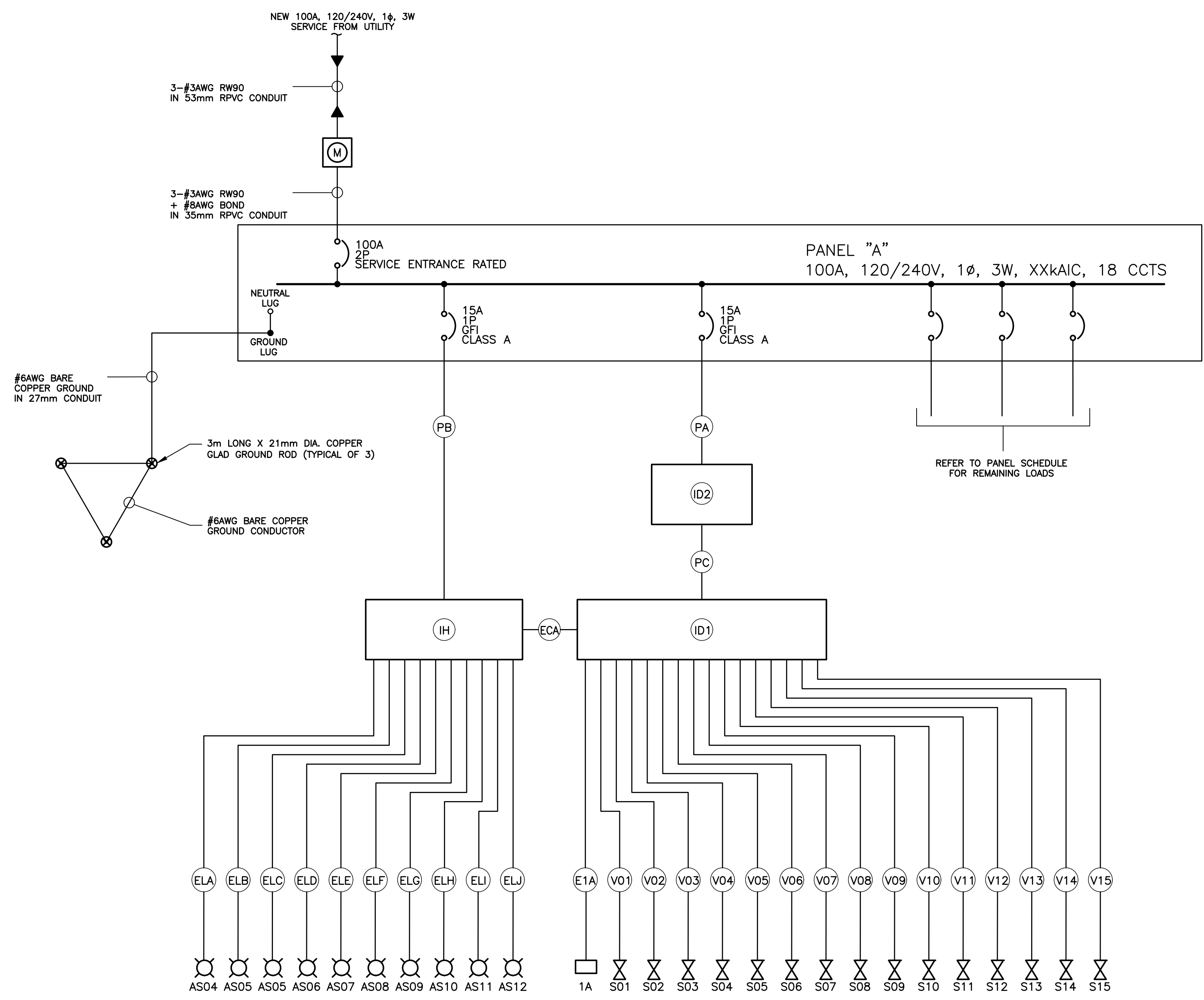
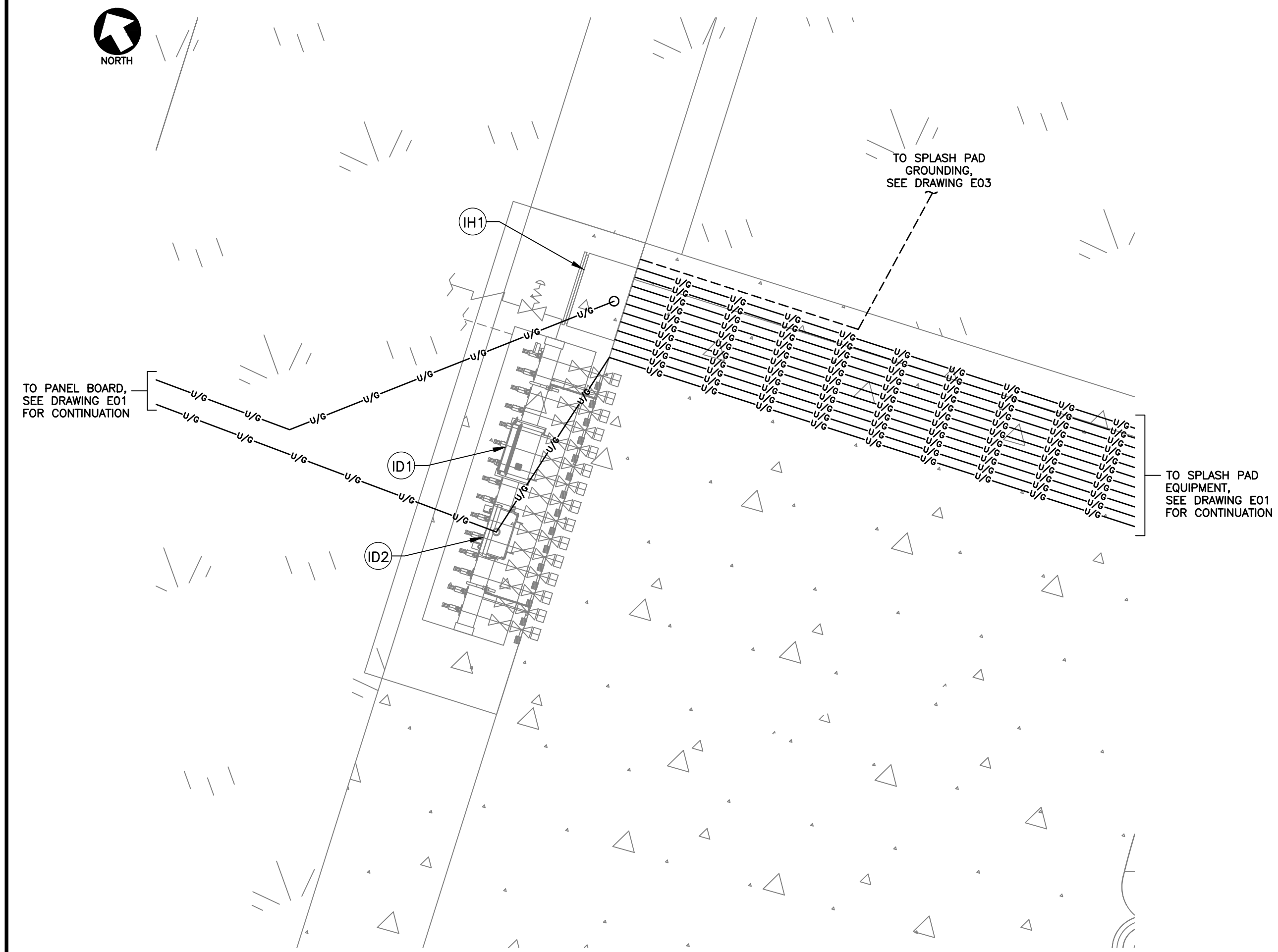
THE TOWN OF IROQUOIS FALLS

DEVONSHIRE PARK SPLASHPAD

ELECTRICAL
ELECTRICAL SITE PLAN AND DETAILS

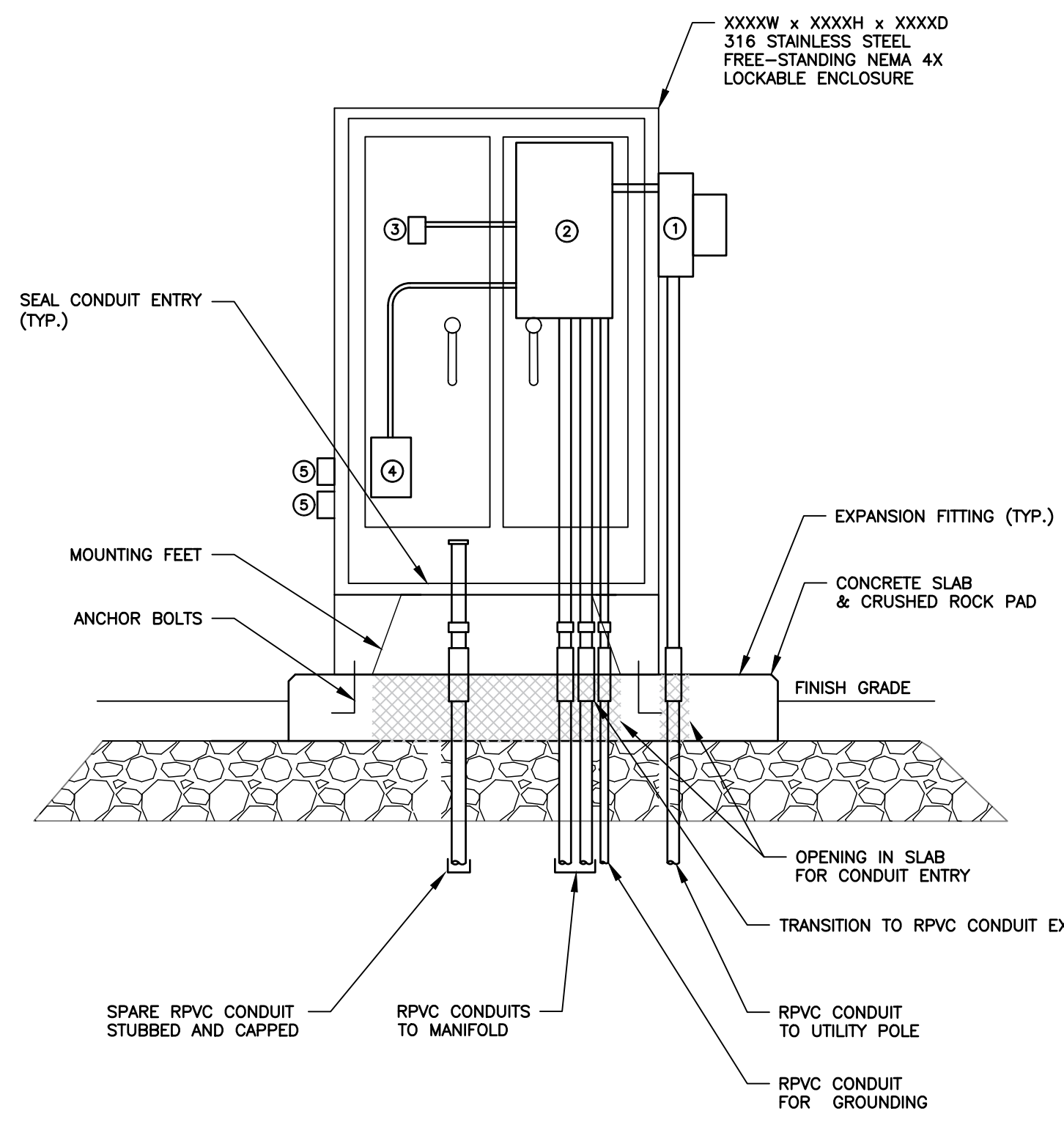


Contract No.	263241.00
Date	MAY/26
Scale	AS NOTED
Designed	MRM
Drawn	MLB
Checked	CD
Approved	DB
Sheet No.	1 of 3
Drawing No.	E01



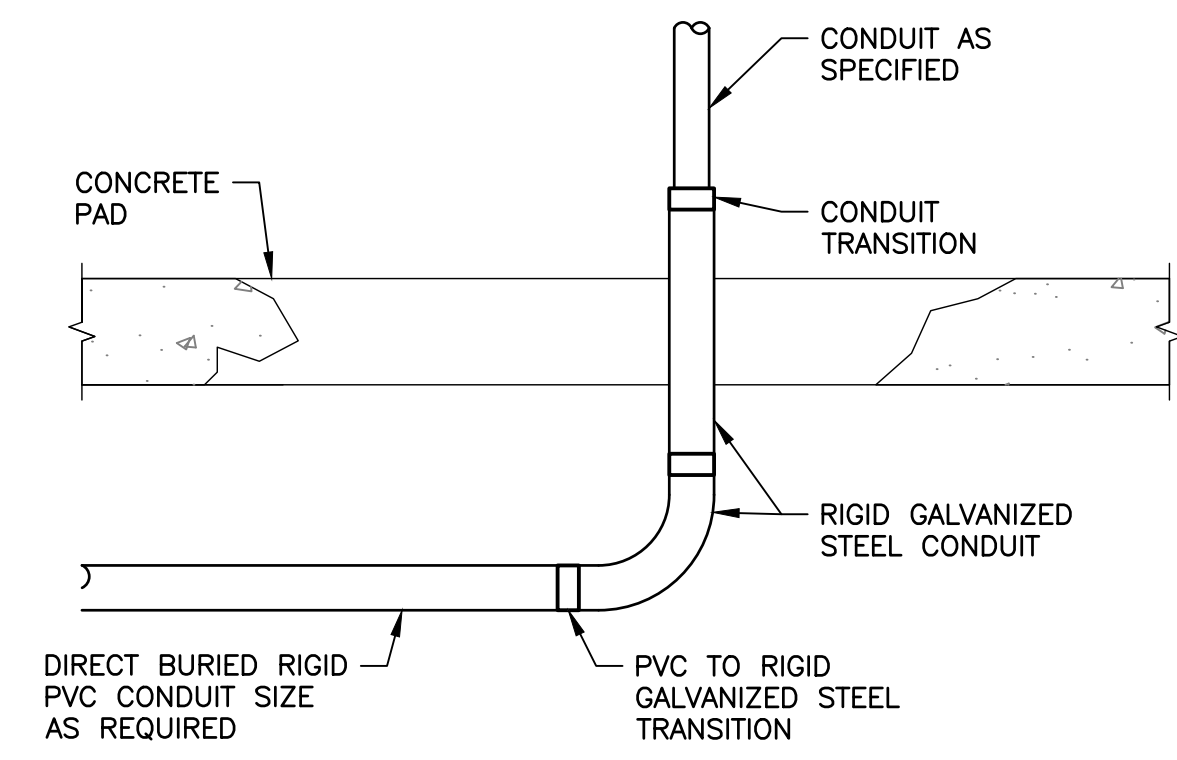
1 ENLARGED PLAN— ELECTRICAL LAYOUT
1:20

- EQUIPMENT LIST**
- 100A-120/240V UTILITY METER BASE
 - 100A, 120/240V PANEL C/W SERVICE ENTRANCE RATED MAIN BREAKER
 - 20A GFI DUPLEX RECEPTACLE
 - 400W ENCLOSURE HEATER
 - 20A GFI DUPLEX RECEPTACLE C/W WEATHERPROOF COVER



2 DETAIL— ELECTRICAL EQUIPMENT ENCLOSURE
N.T.S.

Power: 120/240 V 1 Ø 3 W		PANEL A		SYM. IC.: 225 A	
# OF CKTS.: 18		LOCATION EQUIPMENT ENCLOSURE		MAINS: MAIN BKR: N/A	
Designation	CKT #	Watts	BKR	PHASE	Designation
	1			X	2
	3			X	4
	5			X	6
	7			X	8
	9			X	10
	11			X	12
	13			X	14
	15			X	16
	17			X	18
FEEDER:		SOURCE:		Phase A Total	0.0 A
Remarks:				Phase B Total	0.0 A
				TOTAL	0.0 A



3 DETAIL— TYPICAL CONDUIT STUB UP
N.T.S.

WATER FEATURE EQUIPMENT LIST

TAG	DESCRIPTION
ID1	MAESTROPRO CONTROLLER
ID2	MAESTROPOWER BOX
IH	LUMIFLOW POWER PACK
S01	ELECTRICALLY OPERATED VALVE NO. 1
S02	ELECTRICALLY OPERATED VALVE NO. 2
S03	ELECTRICALLY OPERATED VALVE NO. 3
S04	ELECTRICALLY OPERATED VALVE NO. 4
S05	ELECTRICALLY OPERATED VALVE NO. 5
S06	ELECTRICALLY OPERATED VALVE NO. 6
S07	ELECTRICALLY OPERATED VALVE NO. 7
S08	ELECTRICALLY OPERATED VALVE NO. 8
S09	ELECTRICALLY OPERATED VALVE NO. 9
S10	ELECTRICALLY OPERATED VALVE NO. 10
S11	ELECTRICALLY OPERATED VALVE NO. 11
S12	ELECTRICALLY OPERATED VALVE NO. 12
S13	ELECTRICALLY OPERATED VALVE NO. 13
S14	ELECTRICALLY OPERATED VALVE NO. 14
S15	ELECTRICALLY OPERATED VALVE NO. 15
IA	ACTIVATOR
AS04	LED LIGHT NO. 1
AS05	LED LIGHT NO. 2
AS06	LED LIGHT NO. 3
AS07	LED LIGHT NO. 4
AS08	LED LIGHT NO. 5
AS09	LED LIGHT NO. 6
AS10	LED LIGHT NO. 7
AS11	LED LIGHT NO. 8
AS12	LED LIGHT NO. 9

WATER FEATURE CABLE SCHEDULE

TAG	FROM	TO	TYPE
PA	PANEL A	ID2	2-#12AWG+#12AWG BOND RW90 IN 21mm CONDUIT
PB	PANEL A	IH	2-#12AWG+#12AWG BOND RW90 IN 21mm CONDUIT
PC	ID2	ID1	2-#12AWG+#12AWG BOND RW90 IN 21mm CONDUIT
V01	ID1	S01	2C-#14AWG
S01	ID1	S02	2C-#14AWG
S02	ID1	S03	2C-#14AWG
S03	ID1	S04	2C-#14AWG
S04	ID1	S05	2C-#14AWG
S05	ID1	S06	2C-#14AWG
S06	ID1	S07	2C-#14AWG
S07	ID1	S08	2C-#14AWG
S08	ID1	S09	2C-#14AWG
S09	ID1	S10	2C-#14AWG
S10	ID1	S11	2C-#14AWG
S11	ID1	S12	2C-#14AWG
S12	ID1	S13	2C-#14AWG
S13	ID1	S14	2C-#14AWG
S14	ID1	S15	2C-#14AWG
S15	ID1	IA	2C-22AWG + #12AWG BOND IN 16mm CONDUIT
ECA	ID1	IH	CAT5 + #12AWG BOND IN 21mm CONDUIT
ELA	IH	AS04	2-#12AWG + 2C-22AWG(TWISTED/SHELDDED) + #18AWG BOND
ELB	IH	AS05	2-#12AWG + 2C-22AWG(TWISTED/SHELDDED) + #18AWG BOND
ELC	IH	AS06	2-#12AWG + 2C-22AWG(TWISTED/SHELDDED) + #18AWG BOND
ELD	IH	AS07	2-#12AWG + 2C-22AWG(TWISTED/SHELDDED) + #18AWG BOND
ELE	IH	AS08	2-#12AWG + 2C-22AWG(TWISTED/SHELDDED) + #18AWG BOND
ELF	IH	AS09	2-#12AWG + 2C-22AWG(TWISTED/SHELDDED) + #18AWG BOND
ELG	IH	AS10	2-#12AWG + 2C-22AWG(TWISTED/SHELDDED) + #18AWG BOND
ELH	IH	AS11	2-#12AWG + 2C-22AWG(TWISTED/SHELDDED) + #18AWG BOND
ELI	IH	AS12	2-#12AWG + 2C-22AWG(TWISTED/SHELDDED) + #18AWG BOND
ELJ	IH	AS12	2-#12AWG + 2C-22AWG(TWISTED/SHELDDED) + #18AWG BOND

- NOTES**
- CONFIRM FINAL WIRING TYPES AND CONNECTIONS WITH FINAL EQUIPMENT SHOP DRAWINGS



trace
NATURAL ENVIRONMENTS | BUILT ENVIRONMENTS
698 Main Street
Suite 202
Moncton, NB E1C 1E4
t. 506.386.2946
f. 506.388.7938
info@tracestudio.ca

NOT FOR CONSTRUCTION

No.	Description	Date	By
1	Issued for Client Review	2026.05.08	DB

Revision or Issue

THE TOWN OF IROQUOIS FALLS

DEVONSHIRE PARK SPLASHPAD

ELECTRICAL

ENLARGED PLAN, SINGLE LINE DIAGRAM, DETAILS AND SCHEDULES



CBCL No	Contract No
263241.00	
Date: MAY/26	Scale: AS NOTED
Designed: MRM	Drawn: MLB
Checked: CD	Approved: DB
Sheet No: 2	of 3
Drawing No:	
E02	

ELECTRICAL SCOPE

1 GENERAL:

- .1 THE SCOPE OF THE ELECTRICAL WORK INCLUDES, BUT IS NOT NECESSARILY LIMITED TO, THE SUPPLY, INSTALLATION AND PLACING INTO SERVICE OF THE WORK DESCRIBED ON THE DRAWINGS AND SPECIFICATIONS.
- .2 ELECTRICAL DRAWINGS AND SPECIFICATIONS ARE TO BE READ IN CONJUNCTION WITH THOSE OF OTHER TRADES.
- .3 ELECTRICAL CONTRACTOR SHALL REVIEW WORK DESCRIBED IN OTHER TRADE PACKAGES AND IDENTIFY AND INCLUDE ALL ELECTRICAL INTERCONNECTIONS TO EQUIPMENT PROVIDED BY OTHERS.
- .4 PROVIDE ALL LABOUR, MATERIALS, EQUIPMENT, HARDWARE, TOOLS AND CONSUMABLES AS REQUIRED, DELIVERING A COMPLETE, FUNCTIONAL AND SAFE ELECTRICAL INSTALLATION.
- .5 PLAN, SCHEDULE AND PERFORM WORK IN CO-OPERATION WITH OTHER TRADES.
- .6 ALL EQUIPMENT, MATERIAL AND HARDWARE SHALL BE NEW AND APPROVED FOR THE PURPOSE BY A CANADIAN STANDARDS COUNCIL ACCREDITED AGENCY.
- .7 GIVE ALL NOTICES, OBTAIN ALL PERMITS AND ARRANGE FOR ALL INSPECTIONS AS REQUIRED TO COMPLETE THE ELECTRICAL INSTALLATION.
- .8 ELECTRICAL INSTALLATION SHALL COMPLY WITH THE REQUIREMENTS OF THE ONTARIO ELECTRICAL SAFETY CODE 2024, THE ONTARIO BUILDING CODE 2024 AND THE AUTHORITY HAVING JURISDICTION.
- .9 PROVIDE ALL LABOUR, TOOLS, INSTRUMENTS AND CONSUMABLES REQUIRED TO PERFORM THE TESTING, COMMISSIONING AND PLACING INTO SERVICE OF ALL ELECTRICAL EQUIPMENT AND SYSTEMS INCLUDING THE ELECTRICAL PORTIONS OF SYSTEMS PROVIDED BY OTHERS.
- .10 MAINTAIN ON SITE DRAWINGS ANNOTATED TO INDICATE ALL DEVIATIONS FROM THE CONSTRUCTION DRAWINGS. AT THE COMPLETION OF THE WORK, NEATLY TRANSFER THE INFORMATION TO ANOTHER SET OF DRAWING AND STAMP AS "AS BUILT", ONE SET OF "AS BUILT" DRAWINGS IN OWNER'S MANUAL AND TWO (2) SETS TO THE OWNER.
- .11 PROVIDE WARRANTY FOR WORKMANSHIP AND MATERIALS.
- .12 RELOCATE ANY NEW DEVICE UP TO 3m AT NO ADDITIONAL COST OR CREDIT PROVIDED THE INFORMATION IS PROVIDED PRIOR TO INSTALLATION.

WIRING METHODS

1 CONDUCTORS AND CABLING:

- .1 ALL CONDUCTORS TO BE ELECTRICAL GRADE COPPER, STRANDED FOR #12AWG SIZES AND LARGER.
- .2 INSULATION TO BE RW90 XLPE 600 V WITHOUT JACKET UNLESS OTHERWISE NOTED.
- .3 ACCEPTABLE WIRING TYPES:
 - .1 BUILDING WIRE MINIMUM SIZE #12AWG.
 - .2 BARE CONDUCTOR AND TYPE RW90 INSULATION FOR GROUNDING.

2 RACEWAYS:

- .1 ACCEPTABLE RACEWAY TYPES:
 - .1 ELECTRICAL METALLIC TUBING (EMT), MINIMUM 21mm DIAMETER UNLESS OTHERWISE NOTED.
 - .2 LIQUID TIGHT FLEXIBLE METAL CONDUIT, MINIMUM 21mm DIAMETER DIAMETER UNLESS OTHERWISE NOTED.
 - .3 RIGID PVC (RPVC) CONDUIT, MINIMUM 21mm DIAMETER DIAMETER UNLESS OTHERWISE NOTED.
- .2 PROVIDE APPROPRIATE FITTINGS, COUPLINGS, BUSHINGS, ACCESSORIES AND SUPPORTS FOR EACH RACEWAY SYSTEM AS REQUIRED TO PROVIDE A COMPLETE INSTALLATION.

3 INSTALLATION:

- .1 INSTALL CABLING AND RACEWAYS IN A NEAT AND PROFESSIONAL MANNER SO AS TO CONSERVE HEADROOM AND NOT INTERFERE WITH WORK OF OTHER TRADES.
- .2 WHERE PRACTICABLE, ALL WIRING IS TO BE CONCEALED.
- .3 INSTALL ABOVE GRADE WIRING PARALLEL OR PERPENDICULAR TO BUILDING STRUCTURE.
- .4 USE EMT FOR ALL IN-BUILDING WIRING UNLESS OTHERWISE NOTED.
- .5 USE STEEL FITTINGS AND COUPLINGS ON EMT. DIE CAST FITTINGS NOT ACCEPTABLE.
- .6 INSTALL BONDING CONDUCTOR IN ALL RACEWAYS.
- .7 USE LIQUID TIGHT FLEXIBLE CONDUIT FOR FINAL CONNECTION TO ALL VIBRATING EQUIPMENT.
- .8 USE RAIN TIGHT CONNECTORS AND COUPLINGS ON ALL VERTICAL RUNS OF EXPOSED CONDUIT.
- .9 USE LIQUID TIGHT FLEX FOR ALL ABOVE GROUND EXTERIOR APPLICATIONS.
- .10 USE RPVC CONDUIT FOR UNDERGROUND APPLICATIONS.

CIRCUIT BREAKERS

1 GENERAL:

- .1 BOLT-ON MOULDED CASE CIRCUIT BREAKER, QUICK MAKE QUICK BREAK TYPE FOR MANUAL AND AUTOMATIC OPERATION.
- .2 THERMAL AND MAGNETIC OPERATION.
- .3 SIZED AS INDICATED ON THE DRAWINGS.
- .4 CLASS A GFI TYPE FOR CONNECTIONS TO WATER FEATURE EQUIPMENT.

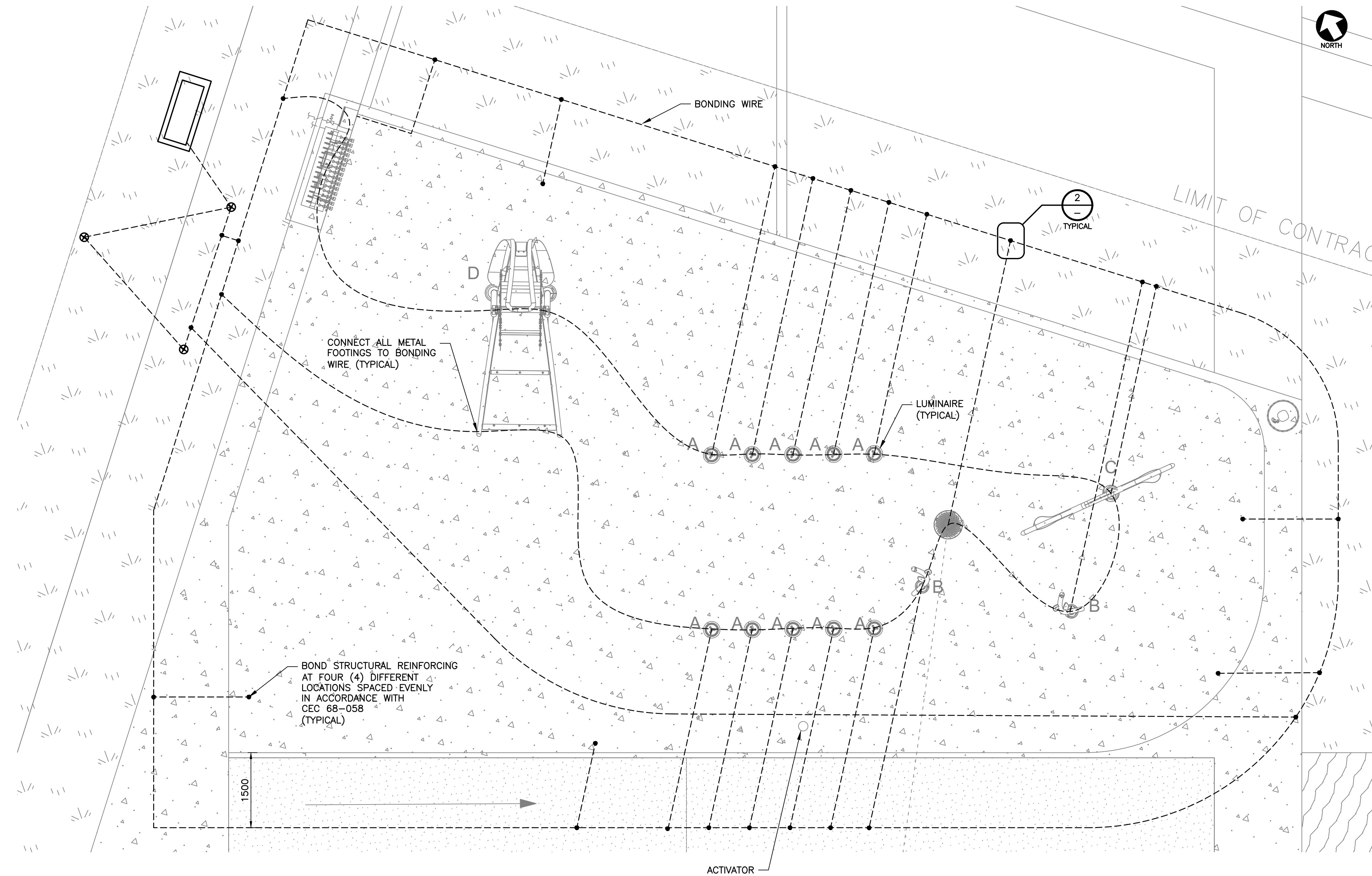
2 INSTALLATION:

- .1 INSTALL CIRCUIT BREAKERS IN PANELBOARDS AS INDICATED ON THE DRAWINGS.
- .2 INSTALL CIRCUIT BREAKER LOCKS WHERE INDICATED.

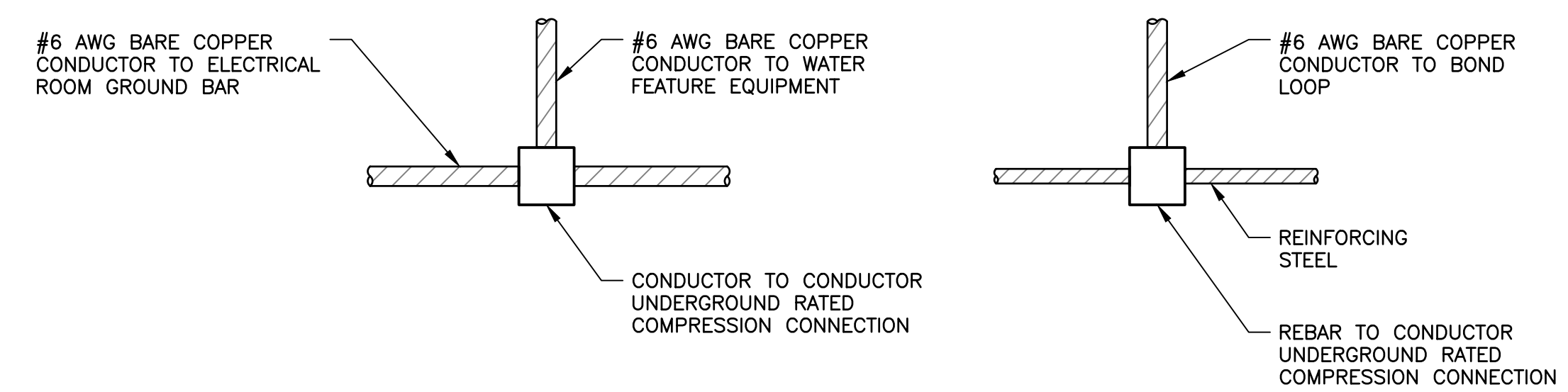
GROUNDING AND BONDING

1 GENERAL

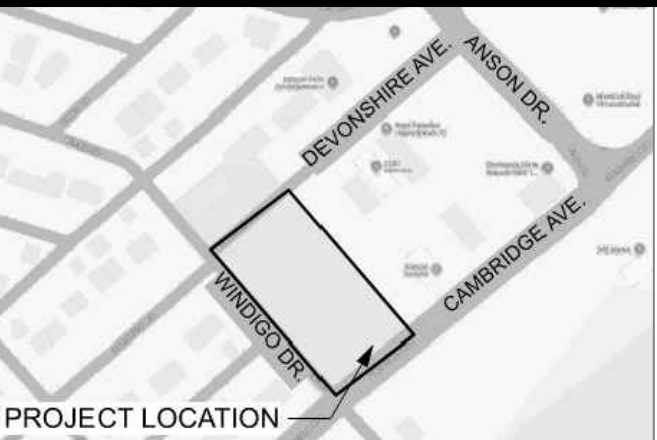
- .1 PROVIDE ALL GROUNDING AND BONDING CONNECTIONS IN ACCORDANCE WITH OESC SECTION 68, THE EQUIPMENT MANUFACTURER'S SHOP DRAWINGS AND THE AUTHORITY HAVING JURISDICTION.
- .2 PREPARE GROUNDING/BONDING CONNECTIONS (CONDUCTOR TO CONDUCTOR AND CONDUCTOR TO REINFORCING STEEL) IN ACCORDANCE WITH MANUFACTURER'S INSTALLATION INSTRUCTIONS. UNDERGROUND AND CAST-IN CONNECTIONS/PRODUCTS SHALL BE RATED FOR THESE APPLICATIONS.



1 PLAN— WATER FEATURE PAD BONDING
1:50



2 DETAIL—TYPICAL GROUND/BOND CONNECTION
N.T.S.



KEY PLAN N.T.S.

trace
NATURAL ENVIRONMENTS | BUILT ENVIRONMENTS
698 Main Street Suite 202 Moncton, NB E1C 1E4
t. 506.386.2946 f. 506.388.7938 info@tracestudio.ca

NOT FOR CONSTRUCTION

No.	Description	Date	By
1	Issued for Client Review	2026.05.08	DB

Revision or Issue

THE TOWN OF IROQUOIS FALLS

DEVONSHIRE PARK SPLASHPAD

ELECTRICAL
WATER FEATURE PAD BONDING, SPECIFICATIONS AND DETAILS



Contract No. 263241.00	Scale AS NOTED
Date MAY/26	Drawn MLB
Designed MRM	Approved DB
Checked CD	Sheet No 3 of 3
Drawing No E03	